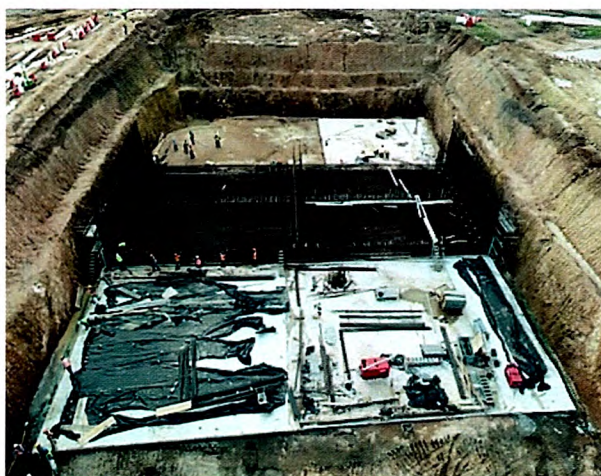


# **GHANA HIGHWAY AUTHORITY**

**MINISTRY OF ROADS & HIGHWAYS**

---



***ONGOING CONSTRUCTION WORKS AT THE MOTORWAY ROUNDABOUT AT TEMA  
IN THE (GREATER ACCRA REGION OF GHANA)***

## **3<sup>ND</sup> QUARTER REPORT YEAR 2018**

THE CHIEF EXECUTIVE  
GHANA HIGHWAY AUTHORITY  
P. O. BOX 1641  
ACCRA  
[ce@highways.gov.gh](mailto:ce@highways.gov.gh)



## TABLE OF CONTENTS

<b>TABLE OF CONTENTS.....</b>	<b>1</b>
<b>LIST OF TABLES .....</b>	<b>3</b>
<b>TABLE OF FIGURES .....</b>	<b>4</b>
<b>ABBREVIATIONS &amp; ACRONYMS .....</b>	<b>4</b>
<b>APPENDICES.....</b>	<b>4</b>
<b>EXECUTIVE SUMMARY .....</b>	<b>5</b>
<b>CHAPTER ONE .....</b>	<b>7</b>
<b>1.0 INTRODUCTION.....</b>	<b>7</b>
1.1 Establishment.....	7
1.2 Policy Objectives .....	7
1.3 Governing Body .....	7
1.4 The Directorate .....	8
1.5 Departments, Divisions and Regions/Road Area Offices.....	8
1.6 Road Condition Mix for Year 2017 .....	9
1.6.1 Road Network Condition 2010-2017 .....	10
1.6.2 Comparison of Gravel Roads Network Condition 1997 – 2017 .....	13
1.6.3 Comparison of Paved Roads Network Condition 2010 – 2017 .....	15
1.6.4 Functional Classification of Roads .....	17
<b>CHAPTER TWO .....</b>	<b>18</b>
<b>2.0 ADMINISTRATION DEPARTMENT .....</b>	<b>18</b>
2.1 Finance Division.....	18
2.1.1 Financial Status Report.....	18
2.1.2 Recurrent Expenditure .....	18
2.1.3 Expenditure Incurred & Releases .....	19
2.1.3.1 Routine Maintenance .....	19
2.1.3.2 Periodic Maintenance & Minor Works .....	19
2.1.3.3 Development/Capital Projects .....	19
2.1.4 Audited Accounts .....	19
2.1.5 Revenue from Tolls.....	22
2.1.5.1 Road and Bridge Tolls .....	22
2.2 Human Resource Division.....	23
2.2.1 Human Resources Planning & Evaluation .....	23



2.3 Internal Audit Division .....	25
2.4 Legal Services Division.....	27
2.5 Management Information Systems (MIS) Division .....	31
2.5.1 In-house Activities .....	31
2.5.2 Toll Operations .....	31
2.5.3 Installation and Configuration of Local Area Network (LAN) .....	31
2.6 Public Affairs Division .....	32
2.7 Training & Development Division .....	33
<b>CHAPTER THREE.....</b>	<b>35</b>
<b>3.0 MAINTENANCE DEPARTMENT .....</b>	<b>35</b>
3.1 Road Maintenance Division.....	35
3.1.1 Maintenance Projects .....	35
3.1.3 GHA Units (MMUI, MMUII, & BMU) .....	38
3.2 Plant & Equipment Division .....	40
3.2.1 Operations.....	40
3.2.2 Completed Jobs (Private Jobs):.....	41
3.2.3 Ferries .....	41
3.2.4 Stores & Supplies Section .....	41
<b>CHAPTER FOUR.....</b>	<b>42</b>
<b>4.0 DEVELOPMENT DEPARTMENT .....</b>	<b>42</b>
4.1 Bridges Division .....	42
4.1.1 Bridge Maintenance Unit – Activities.....	47
4.1.2 Consultancy Services for the Inventory and Condition Survey of the GHA Bridges.....	47
4.1.3 Consultancy Services for The Inventory and Condition Survey of GHA Bridges .....	47
4.2 Contracts Division .....	48
4.3 Materials Division .....	50
4.4 Planning Division .....	52
4.5 Quantity Surveying Division .....	54
4.5.1 Interim Payment Certificates.....	54
4.6 Road Safety & Environment Division .....	57
4.6.1 Road Safety Unit .....	57
4.6.1.1 Western & Central Region .....	57
• Inspection of work zone safety on all sites awarded for the installation of road safety devices to assess their performance in relation to safety. ....	57
4.6.1.2 Eastern & Volta Region .....	57
4.6.1.3 Ashanti & Brong Ahafo Region .....	58
4.6.1.4 Northern, Upper East & Upper West Regions .....	58
4.6.1.5 Head Office Region.....	58
4.6.2 Environmental Management Unit .....	59
4.6.2.1 Environmental and Social Impact Assessment (ESIA).....	59



4.6.2.2 Stakeholder Engagement on the detailed design for the Improvement of south section of National Road N8 in the Central Region .....	59
4.6.2.3 Implementation Support Missions .....	59
4.6.3 Axle Load Control Programme .....	60
4.6.3.1 Mobile Vans .....	60
4.6.3.2 High Speed Weigh In Motion (HSWIM) .....	60
4.6.3.3 Portable Weighing Scales.....	60
4.6.3.4 Axle Load Control at the Ports .....	60
4.6.3.5 Statistics from the Axle Load Stations.....	62
4.7 Survey & Design Division .....	64
4.7.1 Activities Carried Out in the Quarter .....	64
<b>CHAPTER FIVE .....</b>	<b>65</b>
5.0 Conclusion.....	65
5.1 The Way Forward .....	65
Key Performance Indicators .....	65
5.2 Constraints .....	68
5.4 Conclusion.....	69

## LIST OF TABLES

Table 1: 2017 Road Surface Condition Mix (National).....	5
Table 2: GHA Board Members .....	8
Table 3: 2017 Road Surface Condition Mix (National).....	9
Table 4: Regional Road Surface Condition Mix (Year 2017).....	10
Table 5: Comparison of the Surveyed Road Surface Network Condition 2010-2017 .....	11
Table 6: Condition Mix of Paved & Unpaved Road Network Condition from 1997 to 2017 .....	11
Table 7: Gravel Roads Network Condition from 1997 to 2017 .....	14
Table 8: Paved Roads Network Condition from 1997 to 2017 .....	16
Table 9: Functional Classification of Trunk Roads.....	17
Table 10: National Roads.....	17
Table 11: Approved Budget for the Year 2018 & Releases as at 30 <sup>th</sup> September 2018 .....	20
Table 12: Summary of Funds Released .....	21
Table 13: Comparative Toll Revenue Performance (Actual and Budget, 2017 & 2018).....	22
Table 14: Comparative Toll Revenue Performance (Actual And Budget, 2017 & 2018) .....	22
Table 15: Human Resource Strength – GHA Staff Structure as of 30 <sup>th</sup> September, 2018.....	23
Table 16: Age Group Distribution – Whole of GHA 30 <sup>th</sup> September 2018 .....	24
Table 17: Labour Turn Over .....	24
Table 18: Details of Audit Activities Carried in 3 <sup>rd</sup> Quarter 2018.....	25
Table 19: Court Cases involving the Authority.....	28
Table 20: Training & Development Programme for the Year 2018.....	33
Table 21: Training & Development Program organized in the 3 <sup>rd</sup> Quarter of 2018.....	34
Table 22: Achievements in Routine & Periodic Mtce. Projects –as at 30 <sup>th</sup> September 2018 .....	36
Table 23: On-going Maintenance Projects .....	37
Table 24: Details of Works by MMUI MMUII & BMU –as at 30 <sup>th</sup> September 2018 .....	39
Table 25: Details of Completed Jobs (GHA) .....	40
Table 26: Materials Test Results.....	51
Table 27: Consultancy Services Accomplished During the 3 <sup>rd</sup> Quarter.....	53
Table 28: Certificates Vetted & Corrected .....	55
Table 29: Status of Permanent Weighbridge Stations (PWS) .....	61
Table 30: Status of 2018 Performance Matrix Quarterly Monitoring Indicators (3 <sup>rd</sup> Quarter) .....	67

## TABLE OF FIGURES

Figure 1: Graphical presentation of 2017 Road Condition Mix for Paved & Gravel Roads.....	12
Figure 2: Road Condition Mix for Gravel Roads Network of 1997- 2017 .....	13
Figure 3: Road Condition Mix for Paved Roads Network of 1997- 2017.....	15
Figure 4: Monthly Overloading Trend – 3 <sup>rd</sup> Quarter, 2018.....	63
Figure 5: Comparison of Monthly Overloading Trend at PWS 3 <sup>rd</sup> Quarter .....	63

## ABBREVIATIONS & ACRONYMS

<i>AfDB</i>	-	African Development Bank
<i>BADEA</i>	-	Arab Bank for Economic Development in Africa
<i>BMU</i>	-	Bridge Maintenance Unit
<i>CAGD</i>	-	Controller & Accountant General's Department
<i>CATB</i>	-	Central Advisory Tender Board
<i>DANIDA</i>	-	Danish International Development Agency
<i>DFR</i>	-	Department of Feeder Roads
<i>DLP</i>	-	Defects Liability Period
<i>DTF</i>	-	Dutch Trust Fund
<i>DUR</i>	-	Department of Urban Roads
<i>EIA</i>	-	<i>Environmental Impact Analysis</i>
<i>ESIP</i>	-	<i>Environmental &amp; Social Mitigation Plan</i>
<i>EU</i>	-	European Union
<i>GHA</i>	-	Ghana Highway Authority
<i>GCAA</i>	-	Ghana Civil Aviation Authority
<i>GIFMIS</i>	-	Ghana Integrated Financial Management Information Systems
<i>GOG</i>	-	Government of Ghana
<i>GSGDA</i>	-	Ghana Shared Growth & Development Agenda
<i>IPC</i>	-	Interim Payment Certificate
<i>IGF</i>	-	Internally Generated Fund
<i>JBIC</i>	-	Japan Bank for International Co-operation
<i>JICA</i>	-	Japan International Co-operation Agency
<i>KfW</i>	-	Kreditanstalt für Wiederaufbau
<i>MMU</i>	-	Mobile Maintenance Unit
<i>MOF</i>	-	Ministry of Finance
<i>MOT</i>	-	Ministry of Transport
<i>MRH</i>	-	Ministry of Roads & Highways
<i>NITA</i>	-	National Information Technology Agency
<i>OECF</i>	-	Overseas Economic Cooperation Fund
<i>PAP</i>	-	Project Affected Persons
<i>RAP</i>	-	Resettlement Action Plan
<i>RCS</i>	-	Road Condition Survey
<i>RPF</i>	-	Resettlement Policy Framework
<i>SIA</i>	-	<i>Social Impact Assessment</i>
<i>SMEC</i>	-	Snowy Mountains Engineering Corporation
<i>TSDP</i>	-	Transport Sector Development Programme
<i>WATTFP</i>	-	West Africa Transport and Trade Facilitation Project

## APPENDICES

<b>Appendix A</b>	<b><i>GHA Organisational Structure</i></b>
<b>Appendix B</b>	<b><i>Status Report for Development Projects August 2018</i></b>
<b>Appendix C</b>	<b><i>Status Report for Consultancy Services September 2018</i></b>



## EXECUTIVE SUMMARY

The Ghana Highway Authority (GHA) under the Ministry of Roads and Highways (MRH) is charged by Act 540 of December 1997 with the responsibility for the planning, development, management and maintenance of the trunk road network in Ghana. Ghana's trunk road network is about 15,360km. This includes roads under construction and missing links.

It is important to note that infrastructure is the pivot for national development and Ghana Highway Authority (GHA) plays a critical role in the provision of road infrastructure. This role is clearly stated in our vision statement of "Being a world-class provider of safe road infrastructure" and a mission statement of:

"Providing Road Infrastructure Engineering and Management Services: project appraisal, feasibility studies and detailed design; contract preparation and administration; maintenance and operation; civil engineering materials prospecting and testing for roads, bridges and road safety facilities at best value – least cost to support the socio-economic development of Ghana and beyond".

### Conditions of the Ghana Highway Authority's Road Network as at End of Year 2017

A total of 14,582.62km of Paved and Gravel roads, which forms 94.9% of the total trunk roads network, were surveyed and classified into Good, Fair and Poor conditions in the year 2017. Roads under construction and missing links were not surveyed. The overall condition mix as at the end of year 2017 is shown in Table 1.

**Table 1: 2017 Road Surface Condition Mix (National)**

Condition Description	Length (km)	Percentage (%)
Good	7,544.02	54
Fair	4,874.20	35
Poor	1,582.40	11
Total	14,000.62	100

It is hoped that GHA will be able to attain the national target of road condition mix of 70% Good, 20% Fair and 10% Poor in the foreseeable future.

### Staff Strength

The staff strength as at 30<sup>th</sup> September, 2018, stood at **1,215** against an Establishment of 2,526. This comprised 630 being 52% Senior Staff and 518 being 48% Junior Staff. Human resource is our most important resource and we aim to carry our core duties with a GHA workforce that is highly professional. Should this trend continue without any implementation of the GHA replacement plan, the staff will reduce so drastically that the Ghana Highway Authority may not be able to meet its strategic objectives in the

foreseeable future. This is a very serious issue considering that the GHA needs technical staff in all sectors of its operations.

### **Approved Budget for Year 2018**

Under the 2018 National budget, one of the major focus is strategic infrastructure. To this end the Government of Ghana under the Ministry of Roads and Highways (MRH) was allocated GH¢ 532.69m representing about 8% of the capital expenditure budget of the country.

An amount of GH¢ 242,280,229.00 has been allocated to GHA from the MRH budget and this constitutes of Compensation for Employees, Goods & Services and Investment in infrastructure.

GHA has programmed to use these budgetary allocations for the construction of the following roads and bridges

- ✚ Construction of 56km of Trunk Roads.
- ✚ Bridge on the Volta River at Volivo Nsawam Apedwa
- ✚ Kwafokrom Apedwa Road.
- ✚ Tamale Yendi Road.
- ✚ Bolga-Bawku Road.
- ✚ Nkwanta-Oti Damango Road.
- ✚ Berekum-Seikwa Road.
- ✚ Enchi-Dadieso Road.



# CHAPTER ONE

## 1.0 INTRODUCTION

### 1.1 Establishment

The GHA was established by NRC Decree 298 of December 1974. The decree has been superseded by Act 540 of December 1997, to reflect changes, which have occurred in the road sub-sector over the years. GHA is charged by Act 540 with the responsibility for the administration, development and maintenance of all **trunk roads** and related facilities in the country.

### 1.2 Policy Objectives

To accelerate the realization of the Mission Statement, the GHA has devised the following objectives:

- ✦ **Reducing Accident Fatalities:** To work with the National Road Safety Commission and other stakeholders to reduce accident fatalities on the trunk road network.
- ✦ **Reducing Travel Time:** To ensure the provision of affordable, safe and accessible transport system by dualisation of heavily trafficked Trunk Road Sections.
- ✦ **Environmental and Social Mitigation Measures:** To mitigate the impact of the road development and maintenance program on the environment and people.
- ✦ **Improving Quality of Systems Delivery:** To assist MRH and other Ministries, Departments & Agencies (MDA's) to develop and strengthen the appropriate legal, institutional and regulatory framework and regulate all modes of transport to ensure an efficient transport system that will promote quality delivery of services.
- ✦ **Administration & Human Resources Development:** To recruit, train and adequately motivate staff and provide the needed logistics to undertake the services.

### 1.3 Governing Body

A 10-member Board of Directors governs the Authority. The Board is made up of the following as shown in Table 2.

**Table 2: GHA Board Members**

	<b>Names</b>	<b>Position</b>	<b>Organisation</b>
1	Dr. Francis Achampong	Board Chairman	President's Nominee
2	Mrs. Mangowa Ghanney	Member	Ministry of Finance
3	Mr. Edmond Offei Annor	Member	Ministry of Roads & Highways
4	Mr. Felix Aboagye	Member	Road User's Association
5	Mr. Ernest Arthur	Member	Ghana Highway Authority
6	Mr. Benjamin Ewusi Darbah	Member	Private Road Transport Unions
7	Ing. Sir Fredrick Kwabena Akwaboah	Member	Ghana Association of Consultants
8	Mr. Senyo Kwasi Hosi	Member	Private Enterprise Federation
9	Mrs. Adelaide Anno-Kumi	Member	Ministry of the Interior
10	Mr. Ben Asomani	Member	Ministry of Environment Science & Technology

## **1.4 The Directorate**

The Authority has a Managing Director, designated as Chief Executive. Under him, there are three (3) Deputy Chief Executives: the Deputy Chief Executive (Administration); the Deputy Chief Executive (Development); and the Deputy Chief Executive (Maintenance).

## **1.5 Departments, Divisions and Regions/Road Area Offices**

Under the three Departments, there are seventeen Divisions in the Head Office, each of which is headed by a Director and ten Regional Offices headed by Regional Highway Directors. The GHA also has twenty-eight Road Area Offices nation-wide. The Internal Audit Division, though directly responsible to the Chief Executive, is under the Administration Department for management purposes.

The Organisational Chart of the GHA is attached (Appendix A).



## 1.6 Road Condition Mix for Year 2017

A total of 14,000.62km of Paved and Gravel roads, which forms 91.1% of the total trunk roads network, were surveyed and classified into Good, Fair and Poor conditions. Roads under construction and missing links were not surveyed. 872.4km of roads under construction were not surveyed since they often have several detours resulting in a misrepresentation of their actual lengths and surface roughness measurements of the actual road profile. Again, they were excluded in order to have a common reporting system with the Abidjan – Lagos Corridor Organization (ALCO) group of which Ghana is a member. The 487km of missing links were also not surveyed since they were not accessible.

For both Paved and Gravel roads surveyed, condition scores computed for homogeneous sections have been reported. The overall condition mix for 2017 are as shown in Table 3.

**Table 3: 2017 Road Surface Condition Mix (National)**

Condition Description	Length (km)	Percentage (%)
<b>Good</b>	7,544.02	54
<b>Fair</b>	4,874.20	35
<b>Poor</b>	1,582.40	11
<b>Total</b>	<b>14,000.62</b>	<b>100</b>

Table 4 shows the statistics of the whole trunk road network classification surveyed in the period under review on regional basis. The length of roads of any surface type can be obtained regionally and also from national summaries.

**Table 4: Regional Road Surface Condition Mix (Year 2017)**

Region	Good		Fair		Poor		Total
	km	%	km	%	km	%	km
Ashanti	689.7	42%	668.0	41%	271.7	17%	1,629.4
Brong Ahafo	910.1	54%	449.4	27%	335.1	20%	1,694.6
Central	514.6	44%	587.5	50%	76.0	6%	1,178.1
Eastern	584.1	40%	724.6	49%	156.6	11%	1,465.3
Greater Accra	192.3	39%	264.0	53%	38.6	8%	494.9
Northern	1,954.0	67%	685.1	23%	282.6	10%	2,921.7
Upper East	143.3	25%	354.4	63%	69.2	12%	566.9
Upper West	752.9	71%	251.9	24%	59.1	6%	1,063.9
Volta	948.9	71%	315.4	23%	81.6	6%	1,345.9
Western	854.1	52%	573.9	35%	211.9	13%	1,639.9
<b>Total</b>	<b>7,544.0</b>	<b>54%</b>	<b>4,874.2</b>	<b>35%</b>	<b>1,582.4</b>	<b>11%</b>	<b>14,000.6</b>

*Source: GHA Road Maintenance Division September 2018*

### 1.6.1 Road Network Condition 2010-2017

The 2017 road condition report makes comparison with those of 2010 - 2016 using Condition Score Analysis Table 5. The length of roads in good condition increased from 3,865km (29%) in 2010 to 8,171.92 (56%) in 2016 at a steady average annual increase rate of 13.29%. It, however, decreased from the 2016 figure of 8,171.92km to 7,544.0km in 2017. This reduction has resulted from the current erratic situation of funding for road maintenance activities from the Ghana Road Fund.



**Table 5: Comparison of the Surveyed Road Surface Network Condition 2010-2017**

YEAR	GOOD		FAIR		POOR		TOTAL
	Length (km)	(%)	Length (km)	(%)	Length (km)	(%)	Length (km)
2010	3,865	29	5,841	44	3,556	27	13,262
2011	4,566	34	3758	28	5,019	38	13,343
2012	6,184	46	4412	33	2,882	21	13,478
2013	6,490.10	52	4,271.40	34	1,776.50	14	12,538
2014	7,128.53	52	5,452.09	39	1,256.80	9	13,837
2015	7,618.5	56.8	4,838.40	36.1	960	7.2	13,416.9
2016	8,171.92	56.0	5,428.6	37.2	982.1	6.7	14,582.62
2017	7,544.0	54	4,874.2	35	1,582.4	11	14,000.6

*Source: GHA Road Maintenance Division September 2018*

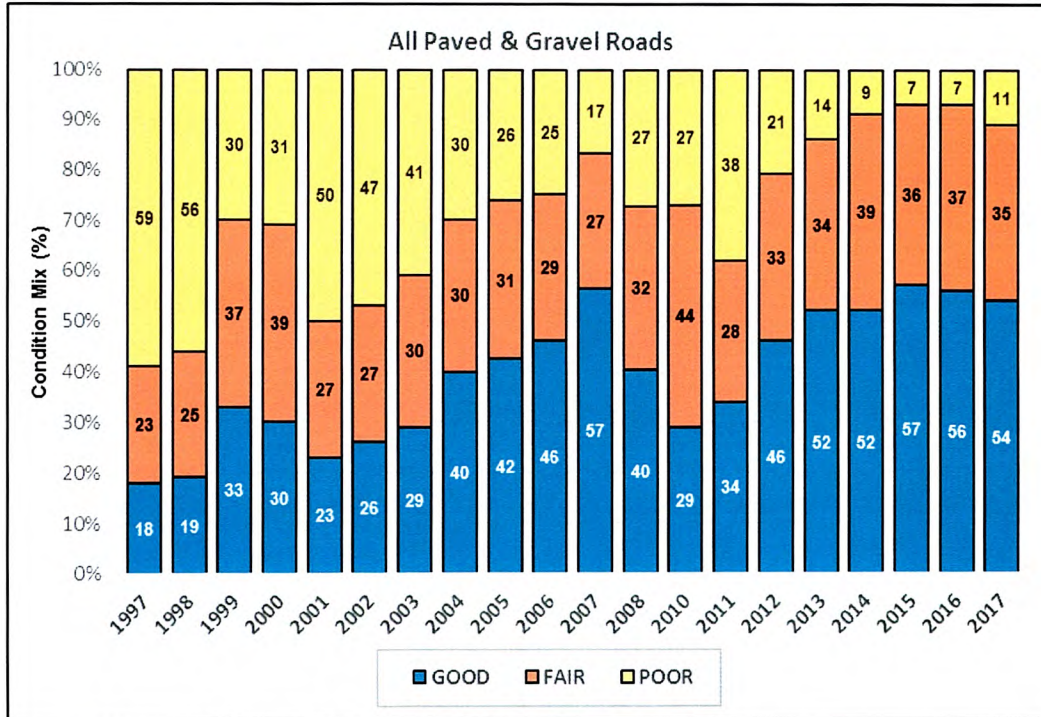
Table 6 and Figure 1 show the progression of road surface condition for both paved and unpaved roads for the period 1997-2017.

**Table 6: Condition Mix of Paved & Unpaved Road Network Condition from 1997 to 2017**

YEAR	GOOD		FAIR		POOR		TOTAL
	Km	%	Km	%	Km	%	Km
1997	2,512.0	18	3,210.0	23	8,233.0	59	13,955.0
1998	2,566.0	19	3,377.0	25	7,564.0	56	13,507.0
1999	4,433.0	33	4,970.0	37	4,030.0	30	13,433.0
2000	3,381.0	30	4,293.0	39	3,448.0	31	11,121.0
2001	2,726.0	23	3,152.0	27	5,984.0	50	11,850.0
2002	3,089.0	26	3,244.0	27	5,639.0	47	11,972.0
2003	3,272.0	29	3,316.0	30	4,540.0	41	11,128.0
2004	4,410.0	40	3,294.0	30	3,250.0	30	10,942.0
2005	4,739.0	42	3,510.0	31	2,928.0	26	11,177.0
2006	5,402.0	46	3,397.0	29	2,924.0	25	11,723.0
2007	6,342.0	57	2,970.0	27	1,868.0	17	11,180.0
2008	4,696.0	40	3,771.0	32	3,150.0	27	11,618.0
2010	3,865.0	29	5,841.0	44	3,556.0	27	13,263.0
2011	4,567.0	34	3,758.0	28	5,019.0	38	13,344.0
2012	6,183.5	46	4,411.8	33	2,881.9	21	13,477.0
2013	6,490.0	52	4,271.0	34	1,777.0	14	12,538.0
2014	7,492.3	52	5,643.6	39	1,262.8	9	14,398.7
2015	7,618.5	57	4,838.4	36	960.0	7	13,416.9
2016	8,171.9	56	5,428.6	37	982.1	7	14,582.6
2017	7,544.0	54	4,874.2	35	1,582.4	11	14,000.6

*Source: GHA Road Maintenance Division, September 2018*

**Figure 1: Graphical presentation of 2017 Road Condition Mix for Paved & Gravel Roads**



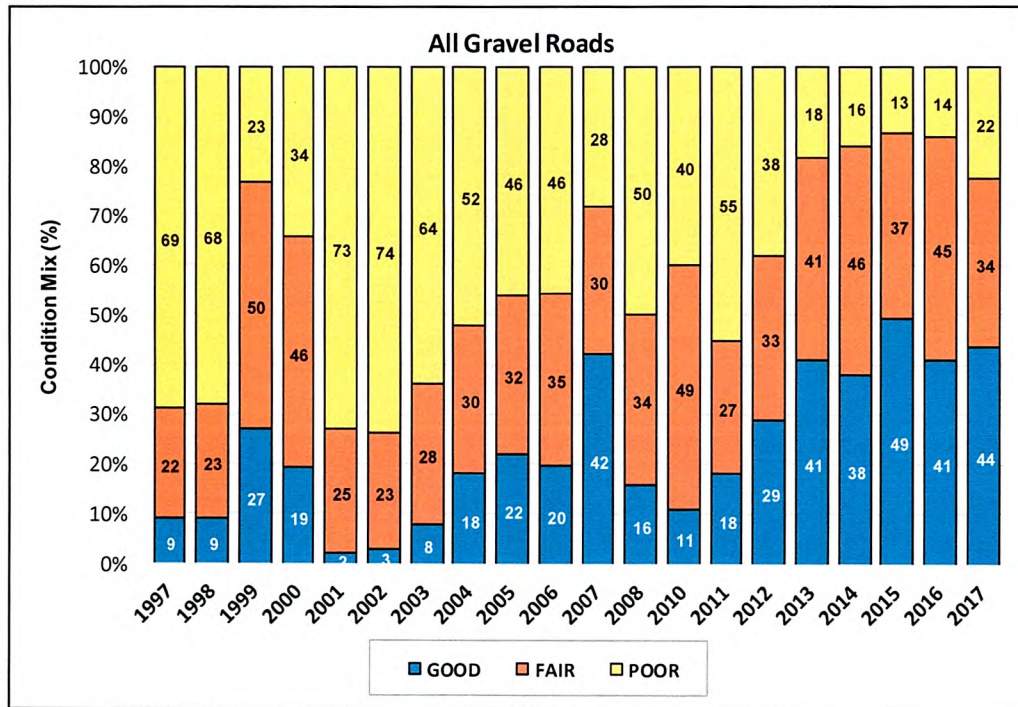
**Source: GHA Road Maintenance Division, September 2018**



### 1.6.2 Comparison of Gravel Roads Network Condition 1997 – 2017

Figure 2 and Table 7 show the progression of Gravel Road Network Condition from 1997 and 2017

**Figure 2: Road Condition Mix for Gravel Roads Network of 1997- 2017**



Source: GHA Road Maintenance Division, September 2018

**Table 7: Gravel Roads Network Condition from 1997 to 2017**

YEAR	GOOD		FAIR		POOR		TOTAL
	Km	%	Km	%	Km	%	Km
1997	690.0	9	1,687.0	22	5,290.0	69	7,666.0
1998	672.0	9	1,716.0	23	5,075.0	68	7,463.0
1999	2,016.0	27	3,732.0	50	1,717.0	23	7,465.0
2000	1,211.0	19	2,926.0	46	2,169.0	34	6,305.0
2001	139.0	2	1,631.0	25	4,828.0	73	6,604.0
2002	198.0	3	1,468.0	23	4,717.0	74	6,383.0
2003	450.0	8	1,598.0	28	3,579.0	64	5,627.0
2004	998.0	18	1,671.0	30	2,938.0	52	5,607.0
2005	1,280.0	22	1,861.0	32	2,675.0	46	5,816.0
2006	1,191.1	20	2,123.4	35	2,784.2	46	6,098.7
2007	2,347.0	42	1,670.0	30	1,581.0	28	5,597.0
2008	894.0	16	1,911.0	34	2,841.0	50	5,646.0
2010	629.0	11	2,828.0	49	2,336.0	40	5,794.0
2011	1,088.0	18	1,696.0	27	3,410.0	55	6,194.0
2012	1,759.0	29	2,011.0	33	2,347.0	38	6,116.0
2013	2,229.0	41	2,248.0	41	980.0	18	5,457.0
2014	2,399.0	38	2,870.4	46	1,005.5	16	6,274.9
2015	2,792.6	49	2,103.4	37	759.1	13	5,655.1
2016	2,430.3	41	2,631.3	45	847.8	14	5,909.4
2017	2,405.6	44	1,855.3	34	1,229.5	22	5,490.4

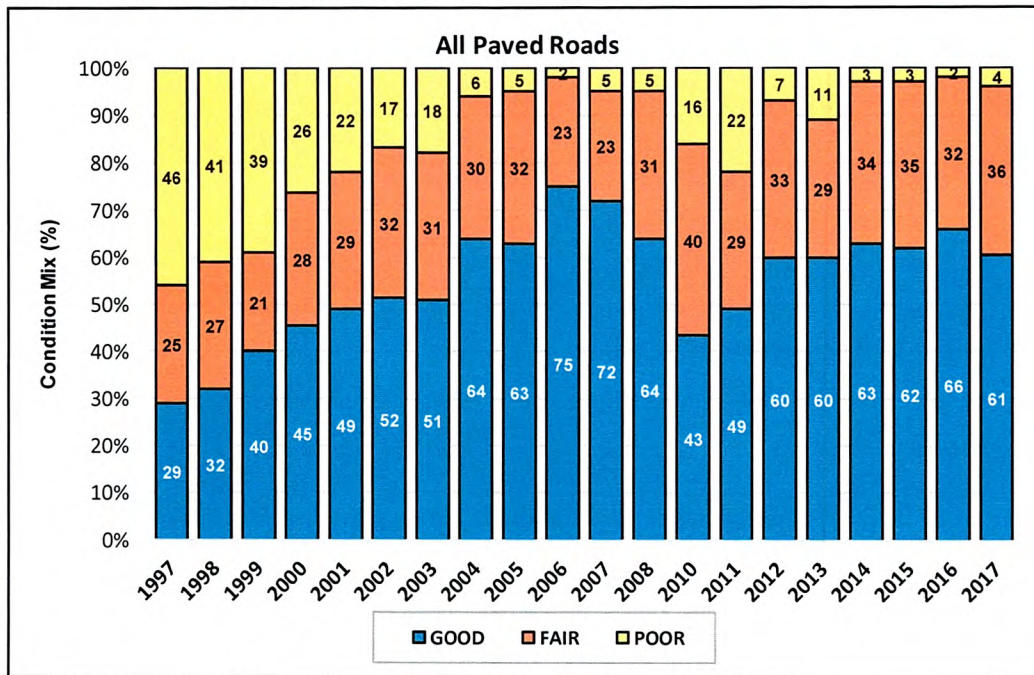
**Source: GHA Road Maintenance Division, September 2018**



### 1.6.3 Comparison of Paved Roads Network Condition 2010 – 2017

Figure 3 and Table 8 show the progression of the condition of the Paved Road Network Condition from 1997 to 2017.

**Figure 3: Road Condition Mix for Paved Roads Network of 1997- 2017**



Source: GHA Road Maintenance Division, September 2018

**Table 8: Paved Roads Network Condition from 1997 to 2017**

YEAR	GOOD		FAIR		POOR		TOTAL
	Km	%	Km	%	Km	%	Km
1997	1,824.0	29	1,572.0	25	2,893.0	46	6,289.0
1998	1,934.0	32	1,632.0	27	2,478.0	41	6,044.0
1999	2,387.0	40	1,253.0	21	2,328.0	39	5,968.0
2000	2,172.0	45	1,373.0	28	1,271.0	26	4,816.0
2001	2,581.0	49	1,516.0	29	1,149.0	22	5,246.0
2002	2,890.0	52	1,777.0	32	922.0	17	5,589.0
2003	2,822.0	51	1,711.0	31	963.0	18	5,501.0
2004	3,404.0	64	1,622.0	30	309.0	6	5,335.0
2005	3,168.0	63	1,632.0	32	253.0	5	5,361.0
2006	4,209.7	75	1,274.1	23	138.6	2	5,622.4
2007	3,995.0	72	1,302.0	23	288.0	5	5,585.0
2008	3,802.0	64	1,860.0	31	309.0	5	5,948.0
2010	3,191.0	43	3,013.0	40	1,220.0	16	7,424.0
2011	3,478.0	49	2,062.0	29	1,609.0	22	7,149.0
2012	4,386.0	60	2,401.0	33	535.0	7	7,323.0
2013	4,278.0	60	2,043.0	29	759.0	11	7,080.0
2014	5,093.4	63	2,773.2	34	257.3	3	8,123.8
2015	4,806.6	62	2,735.0	35	200.9	3	7,742.5
2016	5,741.6	66	2,797.3	32	134.3	2	8,673.2
2017	5,138.4	61	3,018.9	36	333.6	4	8,490.9

**Source: GHA Road Maintenance Division, September 2018**



### 1.6.4 Functional Classification of Roads

Trunk Roads in Ghana are functionally classified as National (N), Inter Regional (IR) and Regional (R) roads as shown in Table 9. Table 10 lists and defines the National roads and the various major cities, towns and regions that the national roads traverse.

**Table 9: Functional Classification of Trunk Roads**

ROAD CLASS	ASR	BAR	CR	ER	GAR	NR	UER	UWR	VR	WR	TOTAL (KM)	%
N	434.9	560.5	326.9	334.6	259.5	1,003.6	287.5	396.8	418.4	442.9	4,465.6	31
IR	334.2	530.7	199.7	369.5	0.0	460.3	61.4	82.9	33.7	304.6	2,377.0	16
R	826.0	938.3	670.2	833.8	199.7	1,472.4	238.6	535.3	963.6	953.8	7,631.7	53
<b>TOTAL (KM)</b>	<b>1,595.1</b>	<b>2,029.5</b>	<b>1,196.8</b>	<b>1,537.9</b>	<b>459.2</b>	<b>2,936.3</b>	<b>587.5</b>	<b>1,015.0</b>	<b>1,415.7</b>	<b>1,701.3</b>	<b>14,474.3</b>	<b>100</b>

*Source: GHA Road Maintenance Division September 2018*

**Table 10: National Roads**

Route No	Name	Major Towns Roads Traverse	Regions that the Roads Traverse
N1	Trans West Africa Highway	Aflao, Accra, Cape Coast Takoradi and Elubo	Volta, Greater Accra, Central and Western Regions
N2	Eastern Corridor	Tema, Hohoe, Jasikan, Nkwanta Bimbila, Yendi and Gushiegu-Kulungulu	Volta, Greater Accra and Northern Regions
N3		Koforidua, Oterkpolu and Krobo Odumase	Eastern Region
N4		Accra, Aburi, Mamfe, Koforidua and Bunso	Greater Accra and Eastern Regions
N5		Asikuma and Ho	Volta Region
N6	Central Corridor	Accra, Suhum, Nkawaw, Konongo, Kumasi, Sunyani, Dormaa Ahenkro and Gonokrom	Greater Accra, Eastern, Ashanti and Brong Ahafo Regions
N7		Sawla, Damango and Fulfulso	Northern Region
N8		Assin Fosu, Anwiankwanta, Kumasi and Bechem	Central, Ashanti and Brong Ahafo Regions
N9		Tamale and Pusuga	Northern Region
N10		Daboasi junction, Atieku, Dunkwa, Kumasi Techiman, Kintampo, Tamale Bolga and Paga	Western, Central, Ashanti, Brong Ahafo, Northern and Upper East Regions
N11		Bolga, Bawku and Pulimakom	Upper East Region
N12	Western Corridor	Elubo, Enchi, Juabeso, Goaso, Sunyani Wenchi, Bole, Wa, Nadowli and Hamile	Western, Ashanti, Brong Ahafo Upper West, and Upper East Regions
N13		Lawra, Han, Tumu and Navrongo	Upper West Region
N14		Sakpeigu and Yawgu	Northern Region
N16		Tumu and Kapulima	Upper West Region
N18		Wa and Han	Upper West Region

*Source: GHA Road Maintenance Division September 2018*

## CHAPTER TWO

### 2.0 ADMINISTRATION DEPARTMENT

#### 2.1 Finance Division

##### 2.1 .1 Financial Status Report

Details of the Approved Budget Ceilings for the year 2018 and the pattern of releases as at 30<sup>th</sup> September, 2018 are provided below:

ITEM DETAILS	<u>Budget Approved</u> <u>GH¢</u>	<u>Amt Released</u> <u>GH¢</u>	<u>% Released</u>
1. Compensation for Employees	25,675,286.00	20,368,807.77	79.30
2. Goods and Services	585,060.00	117,011.35	20.00
3. Investment – GOG: ABFA	89,842,952.00	30,403,538.77	33.84
Arrears (31 <sup>st</sup> Dec., 2017)	968,485,430.00	286,401,699.31	29.57
4. Investment - Road Fund	80,000,000.00	8,255,095.50	10.32
Arrears (31 <sup>st</sup> Dec., 2017)	405,011,353.80	127,406,815.59	31.46
5. IGF (including Axle Load)	15,129,959.00	10,280,416.96	67.95
6. Investment - Donor	126,178,931.00	90,223,316.97	71.50
7. Tolls operational budget	18,370,000.00	6,618,954.50	36.03
8. Tolls operational arrears	4,608,379.60	4,608,379.60	100
	<b>Arrears as at 30<sup>th</sup> September, 2018</b>	<b>Amount Released</b>	<b>%</b>
Salary Related Allowances	3,895,927.00		
Road Arrears: GOG	1,113,075,330.67		
Road Fund	1,014,388,781.15		

##### 2.1.2 Recurrent Expenditure

Details of the Approved Budget Ceilings for the year 2018 and the pattern of releases as at



30<sup>th</sup> September 2018 are provided in Tables 11 and 12.

### **2.1.3 Expenditure Incurred & Releases**

#### **2.1.3.1 Routine Maintenance**

An amount of GH¢125,364,510.66 was outstanding for routine maintenance at 1<sup>st</sup> January, 2018. Certificate forwarded to the road fund for work done as at September, amounted to GH¢218,791,786.67 and payments made by Road Fund Secretariat was GH¢27,185,807.56. The outstanding certificates stood at GH¢284,168,903.87 as at 30<sup>th</sup> September, 2018.

#### **2.1.3.2 Periodic Maintenance & Minor Works**

An amount of GH¢420,031,500.38 was outstanding for work done under Periodic Maintenance & Minor Works as at 1<sup>st</sup> January, 2018. The work done by Contractors as 30<sup>th</sup> September, 2018 amounted to GH¢363,500,088.13. Payment to Contractors as at 30<sup>th</sup> September by Road Fund Secretariat amounted to GH¢86,113,296.50. The total outstanding Certificates as at 30<sup>th</sup> September, 2018 stood at GH¢697,418,292.01.

#### **2.1.3.3 Development/Capital Projects**

An amount of GH¢931,881,922.01 was outstanding as at 1<sup>st</sup> January, 2018 for GOG Funded Projects. Certificates submitted for work done as at 30<sup>th</sup> September, 2018 amounted to GH¢408,765,098.86. The total payment made by MOFEP for the period amounted to GH¢316,805,238.08. The total unpaid certificates as at 30<sup>th</sup> September, 2018 amounted to GH¢1,023,841,782.72.

### **2.1.4 Audited Accounts**

The draft Financial Statement for 2017 has been submitted to the External Auditors; Asafu Adjei and Partners.

**Table 11: Approved Budget for the Year 2018 & Releases as at 30<sup>th</sup> September 2018**

Expense Item	Budgets GH¢		Receipts/Releases GH¢			GH¢	GH¢
	Approved	Revised	1 <sup>st</sup> Quarter	2 <sup>nd</sup> Quarter	3 <sup>rd</sup> Quarter	4 <sup>th</sup> Quarter	Cum. releases
Personnel Emoluments	25,675,286		6,023,653	6,216,488.1	8,128,666.6		20,368,808
Goods and Services	585,060		-	117,011.4			117,011
							-
<b>Total</b>	<b>26,260,346</b>		<b>5,806,502</b>	<b>6,333,499</b>	<b>8,128,667</b>	<b>-</b>	<b>20,268,668</b>
<b>Development</b>							<b>-</b>
- GoG***	169,842,952			160,343,416.4	156,461,822		316,805,238
- Donor*	126,178,931		75,538,200	82,776,004.9	7,319,741.3		165,633,946
Arrears GOG as at 31st Dec 2017	968,485,430		46,400,980				46,400,980
<b>Total (Development)</b>	<b>296,021,883</b>		<b>121,939,180</b>	<b>243,119,421</b>	<b>163,781,563</b>	<b>-</b>	<b>528,840,164</b>
<b>Maintenance</b>							<b>-</b>
- Periodic (Road Fund)**	27,881,971		43,787,164.7	42,326,131.8	42,326,131.8		128,439,428
Road Fund Arrears as 30th September 2018	1,014,388,781.15		65,637,702.1				65,637,702
- Routine (Road Fund)	44,905,745		21,920,866	5,264,941.18	11,906,942		39,092,749
Consultancy - Road Fund Training	7,214,066			800,487	300,000		1,100,487
Tolls Operation Budget**	18,370,000		5,452,849	11,351,750			16,804,599
Internal Generated Fund (Including Axil)	15,129,959		925,835	3,297,427	579,024.17		4,802,286
<b>Total (Maintenance)</b>	<b>1,127,890,522</b>		<b>137,724,417</b>	<b>63,040,737</b>	<b>55,112,098</b>	<b>-</b>	<b>255,877,251</b>
<b>Grand Total</b>	<b>1,450,172,751</b>		<b>265,470,099</b>	<b>312,493,658</b>	<b>227,022,328</b>	<b>-</b>	<b>804,986,084</b>

\* For List of Donors, please refer to Table: 12

\*\*It includes arrears as at 31st December 2017 please refer to page 22 of the report for details

**Source: GHA Finance Division, September 2018**



**Table 12: Summary of Funds Released**

	As at 30 <sup>th</sup> September, 2018	Cumulative for the Year 2018
<b>Recurrent Expenditure:</b>	<b>GH¢</b>	<b>GH¢</b>
Item 1 – Compensation – Salaries & Wages	8,128,666.6	20,368,807.77
Item 2 – Goods & Services	-	117,011.40
Item 3 – Salary Related Allowances		
<b>Item 4 – Investment:</b>		
Routine Maintenance	11,906,941.89	33,827,808
Periodic Maintenance & Minor Works	42,326,131.80	43,787,164.70
Consultancy – Road Fund/ Training	300,000	1,100,486.91
Ferries Operation	-	
Supervision & Data Collection (Rd Cond. Survey)	-	
GHA Units	3,911,623.83	5,874,915.91
Tolls Operation	6,743,370.52	11,351,750.12
Axle Load and weighing Management	579,024.17	3,876,451.01
Compensation	-	3,500,000
<b>Capital/Investment</b>		
GOG Release (both current & arrears)	156,461,822	316,805,238.04
	<b>\$</b>	
DONOR: EU	0	0
ADB	0	0
TSP	1,069,671.00	3,805,716.39
TSIP	592,244.65	1,077,332.16
BRAZIL	0	15,512,801.55 <sup>1</sup>
WATTFP	0	
<b>Total Donor Payments in US\$</b>	<b>1,661,915.65</b>	<b>20,395,850.1</b>

Source: GHA Finance Division, September 2018

\*Exchange Rate \$ 1 = GH¢4.4044

<sup>1</sup> The release was mistakenly reported in the 1<sup>st</sup> Quarter as being from EU but it was from Brazil. The amount is also US\$15,512,801.55 instead of US\$15,572,801.55 that was reported.

## 2.1.5 Revenue from Tolls

### 2.1.5.1 Road and Bridge Tolls

Total revenue accrued from tolls excluding ferries as at 30<sup>th</sup> September, 2018 was GH¢53,274,387.91. This represented 6.43% increase as compared to the amount of GH¢50,056,121.38 collected for the same period as at 30<sup>th</sup> September, 2017.

The recorded net increase of GH¢3,218,266.53 was due to the cash collection exercise at some of the Toll stations as well as monitoring activities and increase in vehicular traffic.

**Table 13: Comparative Toll Revenue Performance (Actual and Budget, 2017 & 2018)**

Toll Revenue Type	As at 30 <sup>th</sup> September, 2018 GH¢	As at 30 <sup>th</sup> September, 2017 GH¢	Increase/Decrease GH¢
Toll Revenue from Roads and Bridges	53,274,387.91	50,056,121.38	3,268,762.13
Toll Revenue from Ada Ferry	50,495.60	00.00	(50,495.60)
<b>Total</b>	<b>53,324,883.51</b>	<b>50,056,121.38</b>	<b>321,826.53</b>

*Source: GHA Finance Division, September 2018*

**Table 14: Comparative Toll Revenue Performance (Actual And Budget, 2017 & 2018)**

Toll Revenue Type	Budget as at 30 <sup>th</sup> Sept., 2018 GH¢	Actual Collection, as at 30 <sup>th</sup> Sept., 2018 GH¢	Percentage Achieved, as at 30 <sup>th</sup> Sept., 2018 %	Actual Collection, as at 30 <sup>th</sup> Sept., 2017 GH¢
Revenue from manual toll stations	36,295,614.00	33,737,175.68	92.95	30,719,297.55
Revenue from Ada Ferry	94,500.00	50,495.60	53.43	00.00
<b>SUB-TOTAL</b>	<b>36,390,114.00</b>	<b>33,787,671.28</b>	<b>92.85</b>	<b>30,719,297.55</b>
Revenue from automated toll stations	21,695,850.00	19,537,212.23	90.05	19,336,823.83
<b>GRAND TOTAL</b>	<b>58,085,964.00</b>	<b>53,324,883.51</b>	<b>91.80</b>	<b>50,056,121.38</b>

*Source: GHA Finance Division, September 2018*



## 2.2 Human Resource Division

The Human Resources Division has responsibility for the key practice areas of recruitment and selection, rewards, performance appraisal, employee relations and motivation

### 2.2.1 Human Resources Planning & Evaluation

The staff strength as at 30<sup>th</sup> September, 2018, stood at **1,215** against an Establishment of 2,526. This comprised 630 being 50.8% Senior Staff and 585 being 48% Junior Staff. Table 15 and Table 16 show staff strength and age distribution of staff of all employees respectively.

**Table 15: Human Resource Strength – GHA Staff Structure as of 30<sup>th</sup> September, 2018**

DESCRIPTION OF	ESTMT	ACTUAL	VACANCY	HQ	GAR	VR	ER	CR	WR	ASH	BAR	NR	UER	LWR	MMU	BMU	MRH
OCCUPATION		STRENGTH													18/1		
TOP EXECUTIVES	4	3	1	3	0	0	0	0	0	0	0	0	0	0	0	0	0
DIRECTORS	26	22	4	15	1	1	0	1	0	1	0	1	1	0	0	0	1
ENGINEERS (FROM ASSIST. ENGR. TO PRIN. ENGR.)	172	147	25	76	3	5	8	6	6	7	7	7	4	7	3	4	4
OTHER PROFESSIONAL STAFF	87	57	30	33	2	4	3	2	1	4	2	2	2	2	0	0	0
ADMINISTRATIVE AND OTHER MANAGERIAL STAFF	481	188	293	92	8	8	7	12	7	12	8	6	6	9	9	2	2
TECHNICIAN ENGINEER STAFF	175	102	73	46	1	3	4	5	10	4	6	5	4	10	1	3	
TECHNICAL AND SUPERVISORY STAFF (I)	162	93	69	28	6	5	7	7	8	5	5	6	2	6	4	3	1
WORKS SUPERINTENDENTS	0	18	18	6	0	0	3	2	1	1	1	1	0	0	2	1	
SENIOR STAFF	1107	630	477	299	21	26	32	35	33	34	29	28	19	34	19	13	8
TECHNICAL AND SUPERVISORY STAFF (II)	167	45	122	4	3	3	3	6	5	5	9	5	1	0	1	0	0
FOREMEN	0	3	3	1	0	0	0	0	0	0	0	1	1	0	0	0	0
ROAD OVERSEERS	0	0	0	0	0	0	0	0	0	0	0	0	0	0	0	0	0
CLERICAL STAFF	219	69	150	21	2	3	10	3	5	7	5	7	2	3	1	0	0
SKILLED WORKERS	483	205	278	56	8	7	11	8	12	21	8	12	6	4	32	20	0
SEMI-SKILLED	550	263	287	82	9	14	28	17	10	21	17	19	13	12	13	8	0
TRAINEES / APPRENTICES	0	0	0	0	0	0	0	0	0	0	0	0	0	0	0	0	0
JUNIOR STAFF	1419	585	834	164	22	27	62	24	32	64	39	44	23	19	47	28	0
GRAND TOTAL	2526	1215	1311	585	43	53	84	69	65	88	68	72	42	53	66	41	8

TECH. & SUPERVISORY STAFF (I) = (SNR.TEC.OFFR. TO CHF.TEC.OFFR.)

TECH. & SUPERVISORY STAFF (II) = (TEC.OFFR GDII & TEC.OFFR GDI)

**Source: GHA Human Resource Division, September 2018**

**Table 16: Age Group Distribution – Whole of GHA 30<sup>th</sup> September 2018**

AGE GROUP DISTRIBUTION OF ALL GHA STAFF-SEPTEMBER-2018							
	55 AND ABOVE	50-54	45-49	40-44	35-39	4 AND BELOW	TOTAL
OCCUPATION CATEGORY							
ADM./ OTHER MANAGERIAL STAFF	60	32	11	14	37	34	188
CLERICAL STAFF	23	8	0	0	7	31	69
ENGINEERS	28	29	9	14	35	57	172
FOREMAN/CHARGEMAN	0	0	0	0	2	1	3
OTHER PROFESSIONAL STAFF	13	7	7	9	12	9	57
SEMI-SKILLED STAFF	82	35	20	37	47	42	263
SKILLED WORKERS	69	44	17	32	24	19	205
SUPERINTENDENT	14	4	0	0	0	0	18
TECH.& SUPERVISORY STAFF (I)	25	14	2	9	20	23	93
TECH.& SUPERVISORY STAFF (II)	0	0	1	2	7	35	45
TECHNICIAN ENGINEER STAFF	30	11	3	15	20	23	102
	344	184	70	132	211	274	1215

*Source: GHA Human Resource Division, September 2018*

## 2.2.2 Staff Recruitment

There was no recruitment during the quarter under review.

## 2.2.3 Labour Turn Over

A total of Thirty-Seven (37) members of staff went on compulsory and voluntary retirement during the 3<sup>rd</sup> quarter of the year.

Details of staff exits are shown in Table 17.

**Table 17: Labour Turn Over**

Exits	Senior Staff	Junior Staff	Total
Retirement	14	23	37
Resignation	0	2	2
Deaths	1	0	1
Dismissals	1	0	1
Vacation of Post	0	0	0
Total	16	25	41

*Source: GHA Human Resource Division, September 2018*



## 2.3 Internal Audit Division

The Division made available to Management various reviews, recommendations and undertook a series of control activities during the 3<sup>rd</sup> quarter of 2018. Table 18 shows details of some of the key activities undertaken by the Division during the period under review and their status.

**Table 18: Details of Audit Activities Carried in 3<sup>rd</sup> Quarter 2018**

No.	ACTIVITY DESCRIPTION	STATUS
1.	Audit of Survey and Design activities	On- going
2.	Review of <b>IPC No. 1 &amp; 2</b> (Reconstruction of Nkwanta – Dambai Road - 50km )	On - going
3.	Review of Construction of Bolgatanga – Bawku – Pulimakom Road – (116km) ( <b>IPC Nos. 1, 4, 5 &amp; 11</b> )	Completed
4.	Review of Rehabilitation of Tarkwa – Bogoso – Ayamfuri Road ( <b>IPC No. 50</b> )	On going
5.	Review of construction of Elubo – Enchi Trunk Road Phase II (KM 17+ 600 – 37 – 600) Addendum No. <b>1 (IPC No. 4)</b>	On going
6.	Pre-audit of Rehabilitation of Ayamfuri – New Obuase – Asawinso Road ( <b>IPC No. 26</b> )	Completed
7.	Review of Construction of Bolgatanga – Bawku – Pulimakom Road – (116km) ( <b>IPC Nos. 8 &amp; 10</b> )	On going
8.	Review of <b>IPC 4</b> (Construction of Elubo- Enchi Trunk Road- KM17+600- 37+600 N12 Phase II- Addendum No.1 )	Completed
9.	Review of proposed washroom at Jema Weigh-Bridge station (IPC No. 1)	On going
10.	Review of <b>IPC 6</b> ( Upgrading of Atebubu- Kwame Danso- Kwadwokrom Road – KM0.0-30.8 Lot 1)	Completed
11.	Pre audit of supply and installation of Network equipment	Completed
12.	Pre – Audit of Mutual Savings & Credit Fund	On going
13.	Pre- Audit : Promotion, interdiction and compulsory retirement inputs both the Regions and Head Office	On-going
14.	Audit of compensation payments	On -going
15.	Examination of payment vouchers (Internally Generated Fund) (IGF) 2017	On -going
16.	Examination of payment of RSDP Payment Vouchers- (2017)September, (vol. 1 and 2) and (2017)October ( 2017) November & December, Vol. 1&2	On-going
17.	Examination of payment of Head Quarters Main Payment Vouchers- (2017) September, Vol.2, (2017)October, (2017) November & December Vol. 1,2 &3	Completed
18.	Review of Monthly Expenditure Returns- BrongAhafo region, Ashanti Region and Northern Region (August, 2018 & September 2018)	Completed

19.	Review of Monthly Expenditure Returns: (June, 2018 – August, 2018) <ul style="list-style-type: none"> <li>• Greater Accra Region</li> <li>• BMU</li> <li>• Volta Region</li> <li>• Eastern Region ( April, 2018)</li> </ul>	Completed
20.	Examination of monthly returns: <ul style="list-style-type: none"> <li>• MMU II – February, March, April, May 2018.</li> <li>• Western Region – July and August, 2018.</li> <li>• Central Region – June and July, 2018.</li> </ul>	Completed

**Source: GHA Internal Audit Division, September 2018**



## **2.4 Legal Services Division**

These civil cases received attention in Court during the year under review. Their status is set out in Table 19.

**Table 19: Court Cases involving the Authority**

	TITLE	COURT	SUBJECT	REMARKS
1	Otinshie Land Case Nuumo Adjey Kwankwo Vrs GHA ORS	High Court, Accra	Alleged trespass to land in Accra belonging to the Authority.	Dormant
2	Wisdom Awuku & Boadi Acheampong VRS GHA	Court of Appeal, Accra	Alleged wrongful dismissal	Appeal to the Supreme Court by the Plaintiffs is still pending.
3	James Manu Vrs GHA	High Court, Kumasi	Compensation	Pending
4	JoeMersa Co. Ltd. Vrs GHA	High Court, Commercial Division, Sunyani	Damages for wrongful termination of contract	Dormant
5	Long Life Confectionery Vrs. Ltd 1. Attorney General 2. GHA 3. China Railway Corp.	High Court, Accra	Compensation	Hearing adjourned to 23/11/18.
6	Esther Boye Boateng Vrs 1. Joyce Ansong 2. GHA	High Court Koforidua	Compensation	Pending. Case Management Conference (CMC) to continue on 8/11/18
7	Kwesi Attah Vrs 1.Kingsley Kwakye 2. Sowah Adjete 3. GHA	High Court Koforidua	This is an accident case and the Plaintiff who was an affected person sued the Authority and its driver among others.	Amicable settlement reached with Plaintiff to be compensated.
8	1. Mrs. Florence N. Agyeman 2.Mr. Charles Agyeman Vrs 1.ECG 2.AARSELF Gh. JV 3.Dopel Engr Ltd. 4.GHA	High Court Kumasi	Plaintiff first sued the first 3 Defendants and later joined the Authority to compel Defendants to rebuild or pay current value of their house and replace family belongings and jewellery that got burnt by fire during the relocation of E.C.G. lines along the Kumasi –Konongo Road Project.	Plaintiff to furnish GHA with title deeds over property to enable process of compensation evaluation to proceed.
9	Elvis Kwaku Agyeman Badu Vrs. GHA	High Court (Labour Division) Accra	Plaintiff sued the Authority for the payments of outstanding salaries and benefits up to his retirement date – 1 <sup>st</sup> Sept. 2011.	Dormant
10	Mercy Kabuki Tetteh (Nee Akrofi) Vrs GHA	High Court (Labour Division) Accra	The Plaintiff claimed that she was compulsorily retired by the Authority even though she has not yet reached the compulsory retirement age of 60 years. The High Court gave judgement in favour of Plaintiff. The Authority has appealed to the Court of Appeal.	Appeal Records forwarded to the Court of Appeal.
11	1.Amoako Ababio & Co. 2.Valuation Dev. Service Vrs GHA	Fast Track High Court, Accra	Writ filed by Plaintiffs to recover from the Authority proposal fees for a Valuation exercise for clients which the GHA failed to pay against the advice of LVD of the Lands Commission .	Dormant
12	Douglas Carl Botwe Vrs GHA	High Court Commercial, Kumasi	The Plaintiff sued claiming payment of compensation due him for the destruction of his 2No. properties during the construction of the Kumasi – Konongo Road Project.	Judgement in favour of Plaintiff on one property. Case dismissed in relation to the other property. Plaintiff received payment of judgement debt on the property for which judgement went in his favour.
13	Ghana Federation of the Disabled Vrs Attorney General, GHA, Millennium Development Authority	High Court, Human Rights Division Accra	It would be recalled that the Plaintiff sued in relation to the Tetteh Quarshie – Mallam Highway. It claimed that the interest of the Disabled was not catered for in that adequate safety measures were not put in place for them.	Terms of settlement now filed and adopted as consent judgement by court.



13	<b>Ghana Federation of the Disabled Vrs Attorney General, GHA, Millennium Development Authority</b>	<b>High Court, Human Rights Division Accra</b>	It would be recalled that the Plaintiff sued in relation to the Tetteh Quarshie – Mallam Highway. It claimed that the interest of the Disabled was not catered for in that adequate safety measures were not put in place for them.	Terms of settlement now filed and adopted as consent judgement by court.
14	<b>Edward Kobblah Penu Vrs Millennium Development Authority, GHA</b>	<b>High Court Human Rights Division, Accra</b>	This case related to the Tetteh Quarshie Mallam Highway. It is a claim for compensation for properties affected by the project. The Plaintiff has furnished a copy of his Property's Valuation Report to the Authority and the Land Valuation for vetting and approval to enable the matter to be settled amicably out of court.	Negotiations are still continuing between the GHA Team and Plaintiff towards the filing of Final Terms of Settlement for adoption by the Court.
15	<b>Top Oil Vrs 1. Alhaji Yussif &amp; GHA</b>	<b>High Court (Land Division) Tema</b>	The Defendant Alhaji Yussif sued the Authority by a counter claim for the wrongful payment of compensation money to the Plaintiff Top Oil.	The case is pending
16	<b>Japan Motors Trading Co. Ltd Vrs GHA</b>	<b>High Court (Commercial Division)</b>	The Plaintiff sued for an Order to direct the Authority to pay an amount of ₵27,612,692. 00 million Japanese Yen being the contract sum for the supply of two water tankers due them.	The principal amount has been settled by the Ministry of Finance. What remains is the claim for interest payments.
17	<b>Nyagsi Engineers Ltd. Vrs GHA</b>	<b>High Court, Commercial Division – Accra</b>	Plaintiff sued the Authority for breach of contract.	Plaintiff filed Entry of Judgement. GHA has written to Plaintiff Counsel to clarify the basis for the computation of the judgement money being claimed by them as against the judgement awarded by the court.
18	<b>Aduana Dawurampong Stool of Assin Atadanso Vrs GHA</b>	<b>High Court, Fast Track Division – Accra</b>	Plaintiff sued the Authority for the recovery of GH¢668,958.43 for value of gravel and other soil material won from Plaintiff's land.	Dormant
19	<b>Ben Sevor Vrs GHA &amp; Others</b>	<b>High Court, Accra</b>	Plaintiff sued the Authority for a declaration that all the Defendants were endangering human lives including Plaintiff's for not attending to potholes created on the Accra – Ho trunk road at Mampong Shai Street junction.	Dormant
20	<b>Nana Adu Agyei Bonse II Ohene of Old Akrade Vrs GHA</b>	<b>High Court, Koforidua</b>	Plaintiff sued the Authority for an Order by Court to compel the Authority to give them a fair and reasonable portion of the proceeds arising from the operations of the Pontoon Services from Old Akrade to Senchi and also for the Authority to file in Court the accounts of proceeds arising out of the Pontoon Services.	Dormant
21	<b>Mrs. Cecilia Buah Blankson Vrs. 1. GHA 2. Managing Director (Mawums Co. Ltd.)</b>	<b>High Court, Cape Coast</b>	The Plaintiff sued the Defendants jointly and severally for damages caused by the poor construction of Drainage in front of her guest house which had allegedly resulted in flooding of her guest house anytime it rains.	Terms of Settlement signed by parties and filed in court.
22	<b>Sydney t. Danso Ladans</b>	<b>High Court, General Jurisdiction, Accra.</b>	Plaintiffs sued the Authority claiming cost of medical and related expenses as well as damages for an accident near Islamic High School near Okurasi Junction, Suhum.	Dormant.
23	<b>Edward Afful</b>	<b>High Court, Koforidua.</b>	Plaintiff sued for trespass to his land, an order for valuation of land and assessment of damages and payment of compensation.	Plaintiff has furnished title on land. His claim forwarded to LVD for approval.
24	<b>Ebusuapanyin Kingsly Quayson Vrs 1. Ghana Water Co. 2. GHA</b>	<b>High Court, Cape Coast.</b>	Plaintiff sued for declaration of title to land abutting Cape Coast - Takoradi Road which he alleges to be trespassed on by the Defendants by laying pipelines without authorization.	GHA was joined to the case at the instance of Ghana Water Company Limited.
25	<b>Nsuta Stool Vrs GHA</b>	<b>High Court, Kumasi</b>	Plaintiff sued for recovery of land on which GHA has a Road Camp. Because GHA has not performed the necessary customary function in recognition of Plaintiffs ownership.	Plaintiff are being engaged by GHA to regularize ownership.

26	<b>Madam Benedicta Adwoa Anibea Vrs Ghana Highway Authority</b>	<b>High Court, Koforidua</b>	Plaintiff sued for the disclosure of total amount of compensation paid to 3rd, 4th, 5th and 6th Defendants and an order for the Defendants to account for all monies received and pay reasonable proportion of the monies recieved by the 3rd, 4th, 5th and 6th Defendants to the Plaintiffs as compensation for demolition of H/NO. GHA/OM 32, Omenako.	The case is pending
27	Quarcoo Tetteh Vrs 1. China Railway (WUJU) Group Corporation 2. Ghana Highway Authority	<b>High Court, General Jurisdiction, Accra.</b>	Plaintiff sued the Authority for damages for the destruction of his fish pond and stock of fish, loss of office equipments and household property and for the loss of revenue from the recreational centre estimated at about GH¢100,000.00	Evidence taking has commenced.
28	Danmens Mechanical Co. Ltd. Vrs Ghana Highway Authority	<b>High Court, General Jurisdiction, Accra.</b>	GHA's Western Region Hired its machine shop to Plaintiff who failed to pay rent for years. GHA locked the shop after several attempts to recover rent monies failed. Plaintiff then sued for relief.	Case at technical stages at the court.
29	Zikpuitor Yaovi Zor Vs GHA & 2Others	High Court, Ho.	Plaintiff sued for an order for GHA to pay compensation money belonging to Mathias Kofi Zor and an order to set aside the Letters of Administration of 2other Claimants	Case pending
30	Yaw Abekwei Vs MiDA, GHA, Land Commission & AG	High Court, General Jurisdiction, Accra.	Plaintiff sued for an order the payment of GH¢1,415,826.75 being compensation for compulsory acquisition of his land.	New Case GHA has entered appearance.
31	Isaac K. Brefo Vs Mr. Amo GHA	High Court, Accra.	Plaintiff sued for Defamation of Character, General Damages for denial of business development and encroachment on land.	Case pending
32	Madam Charity Amponsah - Mensah vs GHA & 5 Others	High Court, Land Division - Accra	Plaintiff sued for Declaration of Tittle and Recovery of land situated near old Dimples which forms part of the N1 Highway Road Reservation.	Case pending
33	Agricultural Development Bank (ADB) Ltd. vrs 1. African Modern Builders Ltd. 2. Fataou Awudu 3. GHA	High Court, Commercial Division, Sunyani	Plaintiff sued the Defendants for a recovery of GH¢2,352,253.00 from 1st Defendant as well as interest on same from 7th May 2018 till date of payment. GHA in the case because of an undertaking given to the effect of payment in joint names of the Bank/ 1st Defendant was not honoured.	GHA has Entered and Filed Appearance and Statement of Defence.
34	Ghana Airport Co. Ltd. Vrs. 1. GHA 2. Ali Issah 3. Ali Issah Ltd., Kumasi	High Court, Kumasi	Plaintiff sued GHA for the recovery of Land it claimed GHA is occupying illegally and for an order directed at GHA to vacate the land.	Case refered to External Lawyers in Kumasi to handle on behalf of GHA.

**Source: GHA Internal Legal Services Division September 2018**



## **2.5 Management Information Systems (MIS) Division**

### **2.5.1 In-house Activities**

The Division continued its function of providing overall co-ordination and supervision of the GHA's data operations, computer systems, networking and hardware services.

The training of staff on the use of computer and other related equipment has been an on-going process.

The Technical Team of the Division continued its routine visits to the toll booths namely Kasoa, Ashiaman and Accra-Tema motorway to maintain the equipment in the toll booths.

### **2.5.2 Toll Operations**

#### **Card Production**

E-cards were produced for customers on request during the quarter under review.

#### **Point Of Sale Machine (POS)**

The staff of the division continue to give support to all the toll stations using the POS machines.

### **2.5.3 Installation and Configuration of Local Area Network (LAN)**

Installation of the Local Area Network of GHA Head Office is in progress. New trunking and cabling were done to replace the existing LAN. About eight hundred (800) network points have been created for users. The points comprised data and voice. Fiber optic cables have been laid to connect cabinets on the various floors to the server. It is envisaged that when completed the new LAN would improve network usage at the Head Office of the GHA.

## **2.6 Public Affairs Division**

### **Activities**

#### **Advertisement / Announcement**

There were three (3) Advertisements in the dailies on behalf of management are as follows:

- ✚ Supply and installation of toll equipment (NCT)
- ✚ Addendum: Supply and installation of toll equipment (NCT)
- ✚ National Competitive Tender (NCT): Supply of Computers, Printers and accessories

Two (2) announcements in the dailies on behalf of management are as follows:

- ✚ Emergency Closure of Black Volta River Bridge at Bamboi.
- ✚ Addendum: Emergency Closure of Black Volta River Bridge at Bamboi

#### **Press Activities/Engagement**

- ✚ Interview on TV3 and Citi Fm on the road diversions on the Tema Motorway Interchange.



## 2.7 Training & Development Division

A summary of the training and the development programme for the year 2018 is presented in Table 20. The details of various programs that were organised during the quarter is also shown in Table 21.

**Table 20: Training & Development Programme for the Year 2018**

CATEGORY	ACTIVITY	LOCATION	NO. OF STAFF TO BE TRAINED IN THE YEAR	NO. TRAINED IN 1ST QUARTER	NO. TRAINED IN 2ND QUARTER	NO. TRAINED IN 3RD QUARTER	NO. TRAINED IN 4TH QUARTER	REASONS FOR ACHIEVEMENT
MGT. LEVEL	Seminar/Conference/ Workshop	Foreign	2	0	1	0		
	Fellowship	Foreign	0	0		0		
	Seminar/Conference/ Workshop/ (In-house)	Local	40	14	35	21		Transportation Infrastructure Conference, Holiday Inn, Airport - 2018 Internal Audit Conference, Accra International Conference Centre - Corporate Governance Training for GHA Board Members, Coconut Grove Regency Hotel, Accra - Launching of 2018 Audits, Ghana Shippers Authority Auditorium - 2017 Editions of FIDIC Contracts Training Modules 1.2,3,4,5. and other 2017 Standard Forms of Contracts, Engineers Centre- 2 Day Training on Project Auditing- Sunlodge Hotel, Tesano
	Local Institution	Local	20	0				
MIDDLE LEVEL	Seminar/Conference/ Workshop	Foreign	5	0	2	2		Road Safety Course, University of Technology, The Netherlands - Seminar on Infrastructure Planning and Construction for Developing Countries, China
	Higher Level Training	Foreign	2	0	0	0		
	Fellowship	Foreign	6	1	0	0		
	Seminar/Conference/ Workshop (In-house)	Local	266	17	42	19		2018 Internal Audit Conference, Accra International Conference Centre, 2017 Editions of FIDIC Contracts Training Modules 1,2,3,4,5 and other 2017 Standard Forms of Contracts, Engineers Centre - 2-Day Training on Project Auditing, Sunlodge Hotel, Tesano
	Higher Level Training (MSc/MBA)	Local	7	8	8	1		MSc Engineering (Pavements & Materials) - University of Florida, Gainesville, USA
	HND/BSc. Programme	Local	4	3	3	0		
	Local Institution	Local	50	0	0	0		
JUNIOR STAFF	HND/BSc. Programmes	Local	4	0	0			
	Seminar/Wkshop/ In-house	Local	80	0	0	42		Tyre Safety Training for Staff of GHA, MRH Conference Room
		TOTAL	515	43	90	85		

**Source: GHA Training & Development Division September 2018**

**Table 21: Training & Development Program organized in the 3<sup>rd</sup> Quarter of 2018**

NO	LOCATION	COURSE TITLE	NO. OF PARTICIPANTS	LEVEL	COUNTRY/ VENUE
1	LOCAL	Transportation Infrastructure Conference	1	Mgt.	Holiday Inn, Airport
2	LOCAL	2018 Internal Audit Conference	6	Mgt.	Accra International Conference Centre
3	LOCAL	Corporate Governance Training for GHA Board Members	10	Mgt.	Coconut Grove Regency Hotel, Accra
4	LOCAL	Launching of 2018 Audits	2	Mgt.	Ghana Shippers Authority Auditorium
5	LOCAL	2017 Editions of FIDIC Contracts Training Modules 1,2,3,4,5 and other 2017 Standard Forms of Contracts	1	Mgt.	Engineers Centre, Roman Ridge, Accra
6	LOCAL	2-Day Training on Project Auditing	1	Mgt.	Sunlodge Hotel, Tesano
7	FOREIGN	Road Safety Course	1	Middle	University of Technology, The Netherlands
8	FOREIGN	MSc Engineering (Pavements & Materials)	1	Middle	University of Florida, Gainesville, USA
9	FOREIGN	Seminar on Infrastructure Planning and Construction for Developing Countries	1	Middle	China
10	LOCAL	2018 Internal Audit Conference	5	Middle	Accra International Conference Centre
11	LOCAL	2017 Editions of FIDIC Contracts Training Modules 1,2,3,4,5 and other 2017 Standard Forms of Contracts	9	Middle	Engineers Centre, Roman Ridge, Accra
12	LOCAL	2-Day Training on Project Auditing	5	Middle	Sunlodge Hotel, Tesano
13	LOCAL	MSc in Road Transportation Engineering	5	Middle	KNUST, Kumasi
14	LOCAL	MBA in Finance	1	Middle	University of Ghana Business School
15	LOCAL	MBA in Finance and Taxation	1	Middle	GIMPA
16	LOCAL	MBA In HRM	1	Middle	University of Ghana Business School
17	LOCAL	BSc Information Technology	1	Middle	Pentecost University
18	LOCAL	BSc Information Technology	2	Middle	Ghana Technology University
19	LOCAL	Tyre Safety Training for Staff of GHA	42	Junior	MRH Conference Room

**Source: GHA Training & Development Division September 2018**



## CHAPTER THREE

### 3.0 MAINTENANCE DEPARTMENT

#### 3.1 Road Maintenance Division

##### 3.1.1 Maintenance Projects

- **Routine Maintenance**

A total of 78,582.49km out of an approved annual programme of 28,124.80km has been achieved for Grass Cutting, Ditch Cleaning, Grading and Pothole Patching. Also, for culvert cleaning & desilting 20,012 out of 23,162 as at the end of the 3<sup>rd</sup> quarter of 2018.

Details of the achievements in the various activities are shown on Table 22.

- **Periodic Maintenance & Minor Rehabilitation**

A total of 54.81km of periodic maintenance works were achieved out of an approved programme of 54.68km (i.e. 100.24%), as at the end of the 3<sup>rd</sup> quarter of 2018.

Table 22 gives details of achievements in the various maintenance activities.

**Table 22: Achievements in Routine & Periodic Mtce. Projects –as at 30<sup>th</sup> September 2018**

GHANA HIGHWAY AUTHORITY										
ACHIEVEMENTS IN ROUTINE AND PERIODIC MAINTENANCE WORKS										
2018										
ACTIVITY	2018 PLANNED PROGRAMME		2018 APPROVED PROGRAMME		1ST QUARTER ACHIEVEMENT	2ND QUARTER ACHIEVEMENT	3RD QUARTER ACHIEVEMENT	4TH QUARTER ACHIEVEMENT	CUMM. ACHIEVEMENT	ACHIEVEMENT PER APPROVED PROGRAMME (%)
ROUTINE MTCE	UNITS		UNITS							
Grass Cutting	Km	10,674.00	Km	10,674.00	3,377.08	8,094.65	9,600.58		21,072.31	197.42
Culvert Cleaning & Desilting (No.)	No.	23,162.00	No.	23,162.00	2,690.20	4,789.88	12,532.41		20,012	86.40
Ditch/Drain Cleaning/Sweeping of Arte. RDS	Km	6,960.00	Km	6,960.00	7,111.30	11,726.09	7,792.17		26,629.57	382.61
Grading Gravel Surface & Ditch Cleaning	Km	5,798.00	Km	5,798.00	1,425.22	6,006.50	1,873.64		9,305.36	160.49
Pothole Patching & Grade High Shoulders	Km	4,692.80	Km	4,692.80	4,580.33	10,203.93	6,790.99		21,575.24	459.75
TOTAL		28,124.80		28,124.80	16,493.94	36,031.17	26,057.38		78,582.49	279.41
PERIODIC MTCE										
Regravelling/Spot Improvement	Km	12.90	Km	12.90	9.24	9.18	6.15		24.57	190.46
Resealing	Km	8.00	Km	8.00	7.02	7.95	7.86		22.83	285.38
Partial Reconstruction	Km	21.53	Km	21.53	0.46	4.62	1.99		7.07	32.83
Overlay	Km	4.05	Km	4.05			0.34		0.34	8.40
Drainage Structures & Bridges	GH¢'M	3.01	GH¢'M	3.01			10.08		10.08	334.80
TOTAL		46.48		46.48	16.72	21.75	16.34		54.81	117.92
Upgrading	Km	1.86	Km	1.86	6.73	6.09	18.21		31.03	1668.38
Rehabilitation of Town Roads	Km	1.45	Km	1.45		2.52	0.70		3.22	221.93
Reconstruction, Rehabilitation & Construction (Former Enhanced Projects)	Km	1.59	Km	1.59			27.46		27.46	1732.49
TOTAL		4.90		4.90	6.73	8.61	46.37		61.71	1,260.67

**Source: GHA Road Maintenance Division September 2018**

## **GOG (Road Fund, Consolidated Fund & Cocobod) Projects**

### **On-going Projects**

Currently there are Six Hundred and Forty-three (643) on-going maintenance projects. The breakdown into various activities is as shown in Table 23.



**Table 23: On-going Maintenance Projects**

ACTIVITY	NO. OF PROJECTS/SOURCES OF FUNDING					LENGTH (KM)
	CONSOLI- DATED FUND	GOLD FIELDS GHANA LIMITED	ROAD FUND	ENHANCED ROAD FUND	COCOBOD	
REGRAVELLING/SPOT IMPROVEMENT	6		55			471.84
RESEALING	1		32	1		227.10
PARTIAL RECONSTRUCTION	12		4	2	26	757.50
SECTIONAL REPAIRS/PARTIAL RECONSTRUCTION/ASPHALTIC OVERLAY	2		1	1		52.20
TOWN ROADS	5		2			42.10
UPGRADING	58		8	17	32	2,249.20
REHABILITATION (UNPAVED)	1			3		137.00
REHABILITATION (PAVED)	11	3	3	7	4	514.47
RECONSTRUCTION	6		2	1	4	311.80
CONSTRUCTION				2	4	247.50
CONSTRUCTION/REHABILITATION				1		11.95
BRIDGE/DRAINAGE STRUCTURES			325		1	
TOTAL	102	3	432	35	71	5,022.66
	643					

Source: GHA Road Maintenance Division September 2018

### 3.1.2 2016 Road Condition Survey

#### 📌 Data Collection

The 2017 Road Condition Report has been completed as reported in the previous quarter.

### **3.1.3 GHA Units (MMUI, MMUII, & BMU)**

#### **MMUI**

The Unit is based at Techiman and is responsible for the Northern Sector of the country.

#### **MMUII**

This Unit is based at Suhum in the Eastern Region and is responsible for the Southern Sector of the country.

#### **BMU**

The Bridge Maintenance Unit (BMU) has been charged with the responsibility of maintaining and repairing defective bridges and major culverts in the country. The Unit has two camps, one at Kukurantumi in the Eastern Region, taking care of the southern sector and the other at Techiman in the Brong Ahafo Region responsible for all bridges in the northern sector of the country.

Details of work executed by the various Units are shown in Table 24.



**Table 24: Details of Works by MMUI MMUII & BMU –as at 30<sup>th</sup> September 2018**

PROGRESS REPORT ON WORKS EXECUTED BY GHA UNITS IN THE 3 <sup>rd</sup> QUARTER OF 2018							
GHA Units	Road Name	Activity	Length (km)	Project Cost (GH¢M)	Total cost of Work done to date (GH¢M)	Cumulated Achievement (%)	Remarks
MMU I	Sawla - Bamboi Road	Resealing	153	6.640	0.400	4.00	2600m <sup>2</sup> of pothole patching executed on the Bole-Tinga. Work in progress.
	Adansi - Asokwa Weigh Bridge Project	Renovation works	-	1.173	0.430	36.66	Paving grout completed. Renovation of buildings on-going.
MMU II	Koforidua - Suhum (Resealing/Partial Reconstruction)	Resealing/Partial Reconstruction	29	7.003	0.024		
	Essuehyia - Otuam Road Phase II	Rehabilitation	6.3	2.300	1.700	92.00	Sealing works on-going
BMU	Kaneshie Foot Bridge		-	0.044	0.024		
	Repair of 50 Bridges in 10 Regions	Repair Works	-	1.500			
	Yensiso Bridge	Repair Works	-	0.017	-	60.00	Damaged parapet wall replaced with steel railings. Sealing of crack in abutment stem on hold due to water level.
	Bridge at Nkumkum	Replacement of Deck	-	0.097	-	45.00	Extension of abutment complete.
	Bridge over R. Mogla at Nakpali	Construction of abutments and piers.	-	0.680	-	40.00	The base for the two abutments and two of the piers have been cast. The stem of one of the pier has been cast 2m above the base. Excavation for the last piers footing is not yet done due to high water level.

**Source: GHA Road Maintenance Division September 2018**

## 3.2 Plant & Equipment Division

### 3.2.1 Operations

The Division is responsible for the:

- ✚ Procurement, maintenance, repairs and keeping records of Plant and Equipment of the Authority.
- ✚ Procurement of general goods (spare parts, oils & lubricants, tyres, batteries etc), stocking of goods, issuing out of goods and updating of stock levels of all goods at the warehouses quarterly and yearly.
- ✚ Provision of Ferry Services.

#### Central Mechanical Workshop

During the quarter, 124 jobs were received and 114 jobs were completed constituting about 92% leaving 8 % outstanding jobs at the Central Mechanical Workshop.

The summary of the jobs received and completed at the various sections is shown in Table 25:

**Table 25: Details of Completed Jobs (GHA)**

Month Section	July		August		September		Total	
	Recd	Comp.	Recd	Comp.	Recd.	Comp.	Recd.	Comp.
Light	16	15	22	15	15	12	53	42
Electrical	15	12	16	14	11	8	42	34
Engine	0	0	2	2	1	1	3	3
Ancillary	4	16	2	1	3	1	9	18
Heavy	1	1	2	2	3	3	6	6
Machine	3	3	2	2	6	6	11	11
							124	114

Note: Recd = Received, Comp = Completed

Source: GHA Plant & Equipment Division September 2018

Note: Recd = Received, Comp = Completed



## **✚ Kumasi Zonal Workshop**

### **3.2.2 Completed Jobs (Private Jobs):**

Revenue generated from private jobs undertaken during the quarter amounted to Five Thousand, Three Hundred and Forty Ghana Cedis (**GH¢5,340.00**) mainly from the heavy section.

### **3.2.3 Ferries**

#### **MESSER'S Sogakope**

It is currently operational and undertaking trips on the Ada Foah – Amedeka route but not on the Ada Foah- Anyanui route. The inability to embark on the Ada Foah – Anyanui route is due to the sand banks at the landing site. This situation is negatively affecting the movement of the people living in and around Anyanui.

#### **M/S Okor**

M/S Okor has been slipped out of water and grounded over several years. Management has approved the sale of this ferry as scrap and the process is currently in progress.

### **3.2.4 Stores & Supplies Section**

The Stores and Supplies Section of the Ghana Highway Authority is charged with the responsibility of;

- ❖ Procurement of General Goods (spare parts, oils & lubricants, tyres, batteries etc) using the guidelines of the Public Procurement Authority.
- ❖ Stocking of goods in designated warehouses at the Central and Regional stores.
- ❖ Issuing out of goods as and when, necessary using requisitions submitted by the end users of the goods.
- ❖ Updating of stock levels of all goods at the warehouses quarterly and yearly.

#### **3.2.4.1 Shopping (Price Quotation)**

##### **✚ Transport Sector Project (TSP)**

Supply and Installation of Network Equipment and Accessories.

IFT NO: GH-GHA 45102-GO-RFQ

Contract has been signed and delivery has been made as well installation completed.

##### **✚ Transport Sector Improvement Project (TSIP)**

Supply of Office Equipment and consumables.

Contract has been signed and suppliers are yet to deliver.

## CHAPTER FOUR

### 4.0 DEVELOPMENT DEPARTMENT

#### 4.1 Bridges Division

- ❖ Construction of Austrian Bridges on Wa – Walewale road (5No. Bridges).  
The project has been divided into five Lots:

***Lot 1. Construction of Steel Bridge over River Gyanwali at Kundugu on the Yala-Kundungu- Sombisi Road. 35m Span.***

**Contractor:** Messer's Mallam Issah Ishaku & Bros Ltd

**Contract Value:** GH¢2,584,437.66

**Award Date:** 6<sup>th</sup> October, 2011.

**Scheduled Completion Date:** 22<sup>nd</sup> June, 2014

Progress is 80%. Work has stalled due to lack of payment.

***Lot 2. Construction of Steel Bridge over River Kudage on the Sombisi – Tantali Road-35m Span.***

**Contractor:** Messer's Bachest Ghana Ltd

**Contract Value:** GH¢2,313,369.93

**Award Date:** 6<sup>th</sup> October, 2011. Progress is 76%.

**Scheduled Completion Date:** 31<sup>st</sup> December, 2014

Work has stalled due to lack of payment.

***Lot 4. Construction of Steel Bridge over River Gongonwu on the Tuvuu-Yikpabongo Road- 70m.***

**Contractor:** Messer's Jiangxi Zhongmei Eng. Const. Co. Ltd

**Contract Value:** GH¢4,464,741.68

**Award Date:** 8<sup>th</sup> January, 2011

The initial location of the bridge was changed due to accessibility problems. The Contractor has written to GHA to discontinue the construction of the bridge. The bridge has been relocated to Nalerigu on the Karaga – Gushiegu – Nalerigu road in the Northern Region. Reconnaissance survey of the proposed location has been undertaken. GHA is waiting for the release of funds to commence the detailed studies. A new Contractor will have to be sourced after the completion of the detailed Engineering studies at the proposed location. Request for funds will be resubmitted

***Lot 5. Construction of Steel Bridge over River Kulpawn on the Luari-Jadima Road-Span is 140m.***

**Contractor:** Messer's China Zhong Hao Ltd

**Contract Value:** GH¢6,910,533.70

**Award Date:** 6<sup>th</sup> October, 2011

Progress is 24%. The Contractor has suspended works due to lack of payment.

***Lot 6. Construction of Steel Bridge over the White Volta River at Mishuo. (Steel bridge of total span 210m)***

**Contractor:** Messer's Tass Kalia Ent. Ltd



**Contract Value:** GH¢20,965,811.09

**Award Date:** 4<sup>th</sup> May, 2016. The Contractor is mobilizing to commence works

**Duration:** 24 months

No physical presence at the site

Pre-commencement meeting was held. Notice to commence works was not issued.

Process for termination of contract is in progress.

***Lot 7. Construction of Bridge over River Pra at Twifo Praso.***

A new bridge is to be constructed at Twifo Praso in order to separate vehicular traffic from rail traffic. It is a 175m span bridge comprising a steel section of 105m and a reinforced concrete section of 70m

**Contractor:** Messer's China Railway No.5 Engineering Company

**Contract Value:** GH¢28,176,797.57

**Award Date:** 4<sup>th</sup> May, 2016.

Ground investigation was completed within the second quarter. The Contractor has also completed setting up his camp. The Contractor submitted an alternative design proposal. Commencement of the works has been scheduled one week after the new design has been approved.

❖ ***Construction/Rehabilitation of Toll plaza on some selected trunk roads within the Country***

Bids were opened on 29<sup>th</sup> June, 2017. Evaluation of the tenders was completed within the second quarter. Evaluation report has been submitted to the Ministry of Roads and Highways (MRH) for approval. Awaiting response from MRH

❖ ***Construction of Toll Plaza at Badukrom on the Cape Coast – Takoradi Road.***

**Contractor:** Messer's Ba-Iseng Ltd

**Contract Value:** GH¢1,408,487

**Award Date:** 15<sup>th</sup> February, 2012

**Scheduled Completion Date:** 18<sup>th</sup> July, 2013

The Contract was terminated in December, 2015.

Cost to complete the outstanding works has been submitted to the Ghana Road Fund Secretariat. Fund to complete the outstanding works has been released to BMU. Progress is 90%.

❖ ***Rehabilitation of Adomi Bridge.***

**Contractor:** MESSER'S Bilfinger MCE GmbH

**Contract Value:** €12,900,000.00

**Award Date:** 16<sup>th</sup> May, 2012

**Initial Completion Date:** 23<sup>rd</sup> May 2013

**Commencement Date:** 10<sup>th</sup> March, 2014

**Revised Completion Date:** 31<sup>st</sup> May 2015

Possession of site for the commencement of works was given to the Contractor on 10<sup>th</sup> March, 2014. Progress is 100%. Substantial Taking over Inspection was undertaken on 7<sup>th</sup> December, 2015. Defects were seen on the asphalt overlay on the deck during the Defect Liability Period. The Contractor is preparing to rectify the defects.

❖ ***Construction of six bridges in Northern Ghana funded by Danida.***

The list of the bridges to be constructed under this project is as follows:

The list of the bridges to be constructed under this project is as follows:

Bridge No. 1 – Kulungugu – Upper East Region – 100m  
Bridge No. 2 – Garu (2no.) – Upper East Region – 100m  
Bridge No. 3 – Doninga – Upper East Region – 50m  
Bridge No. 4 – Sissili – Upper East – 125m  
Bridge No. 5 – Ambalara – Upper West Region – 75m  
Bridge No. 6 – Kulun - Upper West – 100m

The design of the above bridges was undertaken by **M/S Grontmij A/S** now **Sweco** in association with **M/S HAG Consult**. Procurement process has been completed and Contract agreement signed. Waiting for approval of Loan agreement was approved by Parliament within the quarter. Pre-commencement meeting was held on 11<sup>th</sup> September, 2018 and commencement of the works was scheduled to begin from 24<sup>th</sup> September, 2018.

❖ ***Construction of bridge over the Volta River at Volivo and Dufor Adidome.***

The Project consists of 540m long cable stayed bridge to be constructed over the Volta River. The bridge will have three spans (130m, 280m, 130m). The project will enhance the capacity of the Eastern corridor roads and provides an alternative route across the Volta River apart from the Adomi Bridge. The loan agreement was approved by Parliament on 2<sup>nd</sup> November, 2016 and the loan agreement was signed on 30<sup>th</sup> November, 2016 between Government of Ghana and the Japanese Government. The amount of the loan facility is US\$100 million (11,239 billion Yen). As part of the project 70km new road will have to be constructed from Asutsuare junction through Volivo to Asikuma junction. The road project will be funded by the African Development (AfDB). Request for Proposal for the Procurement of Consultants to supervise the works was prepared by GHA and JICA. Reviewed RFP has been received was completed within the quarter. Opening of bids for the selection of Consultants has been scheduled to 8<sup>th</sup> October, 2018

❖ ***Construction of ramps to existing six (6) Footbridges on the George Walker Bush Highway – (N1).***

Drawings for the ramps to the six foot bridges have been completed. Payment has not been received from MoFEP to date.

❖ ***Construction of Two (2) underpasses on the George Walker Bush Highway – (N1).***

Review of design drawings is completed. Comments from the review of the drawing have been submitted to Contractors. Review of Bill of Quantities submitted by the Contractor has been completed.

❖ ***Construction of Six (6) footbridges on the Madina – Pantang road.***

The Contractor has suspended works due to lack of payment and site constraints.

The locations for the footbridges are:

- Fire stone (Atomic junction)
- Zongo junction



- Redco junction
  - Evangelical Presbyterian Church (EP)
  - Seventh Day Adventist Church
  - West African Secondary School
- ❖ ***Rehabilitation of Steel Bridge over River Offin at Dunkwa-on-Offin along Dunkwa Obuasi Road.***  
**Contractor:** MESSER'S Syndicated Capital Ltd.  
**Contract Value:** GH¢ 1,920,104.09  
**Award Date:** 26<sup>th</sup> September, 2016.  
 Contractor has submitted a request for Variation Order (V.O). The V.O has been prepared by GHA and submitted to MRH. Works on the superstructure have been completed.
- ❖ ***Rehabilitation of the Nasia Bridge on the Tamale – Bolgatanga road.***  
**Contractor:** MESSER'S Logistics Services Ltd  
**Contract Value:** GH¢ 1,650,462.85  
**Award Date:** 26<sup>th</sup> September, 2016.  
 Contract has expired in September, 2017.  
 Process for Termination of the Contract is in progress.
- ❖ ***Construction of 42m reinforced concrete bridge over River Anunu on the Adansi Asokwa - Banka road***  
**Contractor:** M/S Attachy  
**Contract Value:** GH¢ 14,271,209.29  
**Award Date:** 20<sup>th</sup> July, 2016  
**Duration:** Nine (9) months  
**Scheduled Completion date:** 30<sup>th</sup> September, 2017  
 The Project is been funded under the Cocoa road projects which has been suspended together with other cocoa road projects.
- ❖ ***Reconstruction of the Iture Bridge over the Sweet River on the Cape Coast – Takoradi road.***  
 Inspection report has been submitted to the Ministry of Roads and Highways. BMU has completed the repair works on the bridge. Messrs Sonitra has submitted a Technical and a financial proposal. Evaluation of the Technical and Financial proposal is ongoing.
- ❖ ***Underwater Investigation of the Ankobra and the Lower Volta Bridge bridges foundation***  
 Inspection of the bridges has been undertaken. Request for approval to sole source Aquatec Marine International for the under water investigation of the bridge foundations has been submitted to the Public Procurement Authority.
- ❖ ***Construction of bridge over River Bechelihi and River Navaribie on the Navrongo – Chuchuliga – Tumu Road.***

Request for approval to issue a Variation Order for the construction of the above bridges have been granted by MRH. Request for concurrent approval to the Central Tender Review board was made within the quarter.

- ❖ ***Replacement of existing bridge over River Luwhe at Ada.***  
Contractor has submitted design drawing to GHA for review. Comments from the review of the design drawings have been forwarded to the Contractor for modification.
- ❖ ***Rehabilitation of the Lower Volta Bridge (Replacement of Expansion joints).***  
GHA has received approval from MRH to procure the works for the replacement of the expansion joints. Request for submission of bids by Contractors was advertised in the dailies on 5<sup>th</sup> April, 2018. Evaluation of the bids was completed within the quarter.
- ❖ ***Construction of two lane underpass to link Spintex and East Legon***  
**Contractor:** M/S Sonitra  
**Contract Value:** GH¢ 14,815,261.48  
**Award Date:** 1<sup>st</sup> August, 2017  
**Commencement Date:** 20<sup>th</sup> July, 2017  
**Duration:** Ten (10) months  
Project is in Defect Liability Period. the project has been taken over substantially.
- ❖ ***Project for Improvement of Ghanaian International Corridors (Grade Separation of Tema Motorway Intersection in Tema)***  
  
**Contractor:** M/S: Shimizu Corporation JV  
**Consultant:** CTI Engineering International Co. Ltd  
**Contract Value:** 6 billion Japanese Yen  
**Agreement Date:** 15<sup>th</sup> December, 2017  
**Commencement Date:** 15<sup>th</sup> February, 2018  
**Duration:** 28 months
- ❖ ***Construction of a double carriageway underpass at Ashaiman and ancillary works***  
Preliminary studies are ongoing.
- ❖ ***Construction of a bridge at Nalerigu in the Northern Region***  
Approval to procure the works through Restricted Tendering was granted on 11<sup>th</sup> June, 2018 by the Public Procurement Authority. Preparation of Tender documents is ongoing.
- ❖ ***Replacement of damaged bridge on the Bimbilla – Jilo road***  
Approval to procure the works through Sole sourcing was granted on 8<sup>th</sup> June, 2018 by the Public Procurement Authority. Preparation of Tender documents is ongoing.
- ❖ ***Construction of the Oterkpolu and Okwenya Bridges***  
GHA is putting together a request for submission to the MRH for approval to procure the works.
- ❖ ***Request for supply of 3000m Modular Panel Bailey Bridge for Emergency works***



## 4.2 Contracts Division

### ✚ Budget for the year

The total budgetary provision for all the projects for this year is One Hundred and Fifty-Five Million, One Hundred and Seventy Thousand, Two Hundred and Thirty-Four Ghana Cedis and Twenty-Two Ghana Pesewas (**Gh¢155,170,234.22**) It covers an aggregate of 194.90km of the trunk road sections in Ghana, which are either under rehabilitation or being improved to provide a satisfactory level of service to the motoring public.

### ✚ On-Going Projects

There are currently Fifty-five (55) ongoing road projects. Forty (40) of these are being funded by Government of Ghana (GoG) and the remaining fifteen (15) by Development Partners, namely BADEA, IDA, AfDB, KfW, EU, SAUDI Fund and ECOWAS.

The status of ongoing development projects are shown in Appendix B.

### ✚ New Projects

The following new projects were awarded during the 3<sup>rd</sup> Quarter:

- ✚ Upgrading / Partial Reconstruction of Obomeng By-Pass (1.65km)
- ✚ Painting of Metal canopy and Minor Renovation of Toll Booths on the Accra – Tema Motorway Toll Plaza (Accra End and Tema End) Lot 2
- ✚ Solar Energy Supply & Installation at Ngleshie – Amanfrom Toll Plaza and Motorway Toll Plaza (Accra End) –Lot 3
- ✚ Solar Energy Supply & Installation at Pobiman Toll Plaza (Tema End) – Lot 4
- ✚ Solar Energy Supply & Installation at Sekyere Toll Plaza, Eastern Region – Lot 5
- ✚ Provision and Installation of Traffic Signs at Afiencya, Dodowa, Ayi Mensah, Ngleshie, Tema – Accra Motorway, Ashiaman and Tsopoli Toll Booths – Lot 1
- ✚ Provision and Installation of Traffic Signs at Aboaso, Kyeremfaso, Offinso, Kubease, Tabere, Adiembra, Bechem and Fiapre Toll Booths – Lot 2
- ✚ Provision and Installation of Traffic Signs at Bamboi, Babator, Tuobodom, Buipe, Yapei, Nasia, Sawla, Moore and Pwulugu Toll Booths - Lot 3
- ✚ Provision and Installation of Traffic Signs at Assin Praso, Dunkwa Offin, Beposo, Ankobra, Jomoro, Sekyere and Kade Toll Booths – Lot 4
- ✚ Provision and Installation of Traffic Signs at Adomi, Sogakofe, Asukawkaw, Nsawam and Ada Toll Booths – Lot 5

Request for supply of Bailey bridge components was approved by MRH. MRH has submitted to the Ministry of Finance (MoF) an Indicative Financial Terms for UK Export Direct loan facility for their consideration.

❖ **Construction of Bolgatanga – Bawku - Polimakom road (116.1km)**

Draft final Design was submitted to GHA for review. Review has been undertaken and the Contractor has been asked to revise the span of the bridges from 16.7m to 26m minimum.

**4.1.1 Bridge Maintenance Unit – Activities**

- ❖ Reconstruction of the Badukrom Toll Booth on the Cape Coast – Takoradi Road  
Progress is 50%
- ❖ Repair of Asutsuare Bridge. Progress is 50%
- ❖ Repair of the Garu Bridge. Progress is 100%
- ❖ Repair of Kulungugu Bridge. Progress is 100%

**4.1.2 Consultancy Services for the Inventory and Condition Survey of the GHA Bridges**

- ❖ Reconstruction of the Badukrom Toll booth on the Cape Coast – Takoradi road.  
Progress is 90%
- ❖ Repair of bridge over River Lome at Asutsuare on Akuse junc – Asutsuare road.  
Progress is 100%
- ❖ Repair of bridge over the Black Volta River at Bamboi on Techiman – Wa road.  
Progress is 100%

**4.1.3 Consultancy Services for The Inventory and Condition Survey of GHA Bridges**

The project has been divided into 4 Lots.

Lot 1 is being undertaken by Messrs Delin Consult.

The project covers Central and Western Regions

Messrs Delin has submitted the Draft final report. Review of the report is ongoing.

Lot 2 is being undertaken by Messrs Associated Consultants Limited.

The project covers Greater Accra, Volta and Eastern Regions

Messrs Associated Consultants Limited has submitted the Draft final report. Review of the report is ongoing.

Lot 3 is being undertaken by Messrs Comptran Engineering Planning and Associates.

The project covers Ashanti and Brong-Ahafo Regions

Messrs Comptran Engineering Planning and Associates has submitted their interim report. Review of the report is ongoing.

Lot 4 is being undertaken by Messrs Hag Consults.

The project covers Northern, Upper West and Upper East Regions

Messrs Hag Consults has submitted the Draft final report. Review of the report is ongoing.

Draft compilation of the Consultant's report by GHA was completed within the Quarter



## **# Work Stoppages**

A number of Contractors suspended works during the quarter under review. The suspension of works was due to non-payment of IPC's by the Employer. It is anticipated that payments would soon be effected by the Employer to enable them resume the works.

Works suspended include the following:

- # Berekum Sampa
- # Rehabilitation of Apedwa-Bunso Road
- # Eastern Corridor Lots 5 and 6
- # Upgrading of Bitumen Surfacing of Elubo-Enchi Road (N 12) Phase 1 (Km 0-17.6)
- # Construction of Elubo-Enchi Road Phase 2 (Km 17.6-37.6)-Phase 2
- # Emergency Works for the Upgrading of Ho-Adidome Road (67.0-79.8km) and Adaklu Xelekpe-Abuadi Road 5km-Lot 1
- # Emergency Works for the Upgrading of Ho-Adidome Road 52.2-67.0km –Lot 2
- # Eastern Corridor Roads Project.Lot 1:Asikuma Junction-Hohoe Road (Km 0-45)
- # Tetteh Quarshie – Mamfe Road Project,Madina –Pantang Section
- # Bolgatanga-Bawku-Polimakom Road(116.1km)
- # Construction of Wa-Walewale Road (57km)
- # Bomfa Junction - Asiswa - Bekwai, Bekwai - Ampaha – Asiswa
- # Bekwai - Ampaha - Asiswa (Addendum No. 1)

## **Projects Taken-Over.**

The following projects were taken over during the quarter under review

- # The Nsawam - Apedwa Road, Kwafokrom - Apedwa (Dual carriageway) South Bound – Lot 6 was finally taken over on 3<sup>rd</sup> July, 2018.
- # The Construction of Tunnel Under the Accra -Tema Motorway to Link East Legon and Spintex Road was also substantially taken over on 28<sup>th</sup> August, 2018.

## **Procurement**

- # Opening of Technical Proposals for Consultancy Services for Traffic Count at Pobiman Toll Plaza.
- # Procurement of Contractors for the Decongestion of Ejisu – KNUST Section of the N6 (**Lot 1: KNUST and Boadi Roundabouts**) and (**Lot 2: Oduom and Ejisu Roundabouts**) was done through Sole Sourcing which was approved by the Public Procurement Authority.

## **# Projects Substantially Completed Over the Period**

The Rehabilitation of Ayanfuri – Asawinso Road Lot 1 (Ayamfuri - New Obuasi) (Km 0-26) was substantially taken over on 29<sup>th</sup> May, 2018.

## 4.3 Materials Division

The Materials Division of Ghana Highway Authority is made up of five (5) sections namely:

- ✚ Soils and Aggregates
- ✚ Foundations
- ✚ Pavement
- ✚ Bituminous Products
- ✚ Research

All these sections in addition to their peculiar assignments train newly recruited Engineers, students on industrial attachment and National Service Personnel.

### **The Soils and Aggregates Section undertook the following**

- Testing of construction materials and causes of distresses on roads and structures.
- Laboratory analysis and research into the use of new materials and chemicals, to ascertain their effectiveness in the improvement of road pavement materials.
- Concrete Mix designs
- Tested soil samples from the Tema Motorway Interchange Project

### **The foundation section reviewed of progress reports from the following road projects**

- ✚ Review of progress reports from road projects

### **The pavement section conducted the following activities;**

- Evaluation of the performance of some existing pavements
- Review of progress reports from road projects
- Performed deflection tests on the following roads:
  - Performed deflection tests on the following roads:
    - a) Selection Arterials and Collector Roads for DUR in Kumasi Metropolis
    - b) Verification test at the Ho Airport
    - c) Kumasi Airport Project

### **Bituminous Products**

The Bituminous Products Section undertook the following activities during the quarter under review:

- ✚ Review of progress reports from road projects
- ✚ Tests on bitumen samples and asphalt mixes submitted by Bitumen Marketers, Contractors and Consultants.



- ✦ Asphaltic Concrete mix designs checks for selected roads in the Eastern and the Greater Accra Region, core density tests on some portions of Urban Roads in Accra, Tema Takoradi and Ho Town Roads.

Table 26 shows the details of various test that were carried out during the quarter

**Table 26: Materials Test Results**

**Table 2 TREND OF INTERNALLY GENERATED FUND - 3rd QUARTER, 2018**

SOURCE	MONTH			No. OF TESTS	AMOUNT IN Gh. CEDIS			TOTAL IN Gh CEDIS
	JULY	AUGUST	SEPT		JULY	AUGUST	SEPT	
Concrete test	51	41	91	184	1,540.00	1,228.00	2,740.00	5,508.00
Shmidt Hammer	3	10	-	13	120.00	410.00	-	530.00
Pavement Investigations	0	2	1	3	-	33,521.00	23,003.21	56,524.21
Aggregate tests	6	9	5	20	1,232.50	1,321.40	1,632.00	4,185.90
Bitumen Tests	11	9	10	30	13,464.00	12,792.00	12,092.00	38,348.00
Soils tests	7	11	10	28	10,445.00	18,059.00	17,435.00	45,939.00
Equipment Calibration	0	0	0	0	-	-	-	-
Foundations & Geotechnical Inv.	0	0	2	2	-	-	2,000.00	2,000.00
<b>GRAND TOTAL</b>	<b>78</b>	<b>82</b>	<b>119.3</b>	<b>280</b>	<b>26,801.50</b>	<b>67,331.40</b>	<b>58,902.21</b>	<b>153,035.11</b>

*Source: GHA Materials Division September 2018*

## **4.4 Planning Division**

The Planning Division is responsible for the planning of the trunk road network and the establishment of reliable traffic data base in the country. The Division is also responsible for the initiation, identification, preparation and monitoring of all GHA development projects and road project components of all regional corridor programmes involving Ghana and other countries in the sub-region. Additionally, the Division provides the main link between the GHA and Development Partners for the efficient coordination of road projects and related facilities.

The Planning Division in pursuance of the foregoing operates through the following Sections:

- ✚ Strategic Planning, Monitoring and Evaluation (SPME)
- ✚ Development Project Planning (DPP)
- ✚ Public Private Partnership (PPP)
- ✚ Transportation Economics (TE)

### **Strategic Planning, Monitoring & Evaluation (SPME)**

- Preparation of corporate planning including the development, implementation and monitoring of GHA strategic plan.
- Road network planning including development of comprehensive maps of the entire highway network and review of the highway classification system from time to time
- Road data Collection and analysis and traffic projections
- Monitoring and Control of GHA plan during the year of performance
- Monitoring and Controlling of development and Maintenance of projects
- Evaluation of project.

### **Development Project Planning (DPP)**

- Road Reservation Management
- Development project planning including preparation of Terms of Reference(TOR) for prefeasibility, feasibility and detailed engineering studies.
- Selection of Consultants.
- Liaises and addresses concerns of Funding agencies to prepare development projects and meeting the progress on donor funded projects.

### **Public Private Partnership (PPP)**

This Section assists in:

- Planning, mobilization and implementation of PPP projects according to national laws and regulation through coordination with the Ministry of Roads and Highways and Ministry of Finance on all issues relating to PPP.
- Involved in corporate finance including appraisal of economic viability of Internally Generated Fund opportunities.



## Transportation Economics (TE)

- design of policies to guide development of a balanced transportation system that in turn would promote public transport and protect the environment and enhance the safety of communities
- review existing transport policies, strategies and development programs and ensuring that the transport development are suitable, and would improve transport systems of the country on the continuous basis in harmony with growth.
- conduct transport studies to develop comprehensive long term transportation plans, which support the needs of the economic development of Ghana.
- prepares the GHA's Capital Investment Budgets, Performance Contract and monitoring of budget performance and performance contract targets.
- Undertakes the collection of transport economic data and maintains the analysis input data for the Highway Design and Maintenance Model(HDM-4)

Table 27 shows the number of Consultancy Services for design studies, Technical Assistance and works supervision accomplished within the quarter. Details of statuses of on-going Consultancy on on-going projects are as shown in Appendix C

**Table 27: Consultancy Services Accomplished During the 3<sup>rd</sup> Quarter**

Agency	Design Studies/ Technical Assistance	Design Review & Construction Supervision	Remarks
World Bank	2	5	One(1) is suspended, three(3) are in defect liability state and three(3) are on-going,
Danida		2	one (1) is suspended, one (1) is on-going
AfDB		3	Two (2) projects have been taken over, one (1) submitted final report
Brazilian Funded Project		1	Project is on-going
ORIO		1	Project is about to commence
JICA	2	1	All projects are on-going
GOG		5	All projects are on-going
PPP	3		All projects are on-going

*Source: GHA Planning Division September 2018*

## **4.5 Quantity Surveying Division**

### **4.5.1 Interim Payment Certificates**

A total of 201 certificates were vetted and passed at the close of the 3<sup>rd</sup> quarter of the year 2018.

The breakdown is as follows:

- ✚ 22 Development Projects
- ✚ 179 Maintenance Projects

Table 28 gives details of certificates that were vetted and corrected.



**Table 28: Certificates Vetted & Corrected**

IPC	PROJECT	SUBMITTED AMOUNT GH¢	CORRECTED AMOUNT GH¢	SUBMITTED AMOUNT GH¢	CORRECTED AMOUNT GH¢
3	Upgrading of Tamale – Nanton Karaga Road, Provision & Installation of retro-reflective studs on Buipe – Tamale Road	563,352.81	557,352.81		
1	Construction of 300m length concrete U – drain on Twifo Praso – Aboabo Road Lot 1	188,349.70	187,949.70		
8A	Pothole Patching on Chuchuliga – Sadema Town Roads	14,624.46	14,566.62		
1	Pothole Patching and Shoulders repairs works on Kuntense - Bekwai (19.50km) & Kokofu - Ahwiren Roads (6.00km) - Lot 50	284,163.05	273,363.05		
2A	Construction of speed calming Devices on Abuakwa - Bibiani Road Lot 25	298,135.50	297,680.53		
2B	Pothole Patching and Shoulders repairs works on Bolga - Bawku, Missiga & Garu Roads	68,891.39	68,836.21		
4	Construction of Access Diverging & Merging lane to the Cash processing centre in Accra at the Centre Services Complex, Spintex Road	5,529,476.87	5,491,036.93		
1	Pothole Patching on Akim Swedru town Roads (6km)	336,443.73	335,645.39		
2A	Construction of speed calming Devices on Nkwanta - Manso Nkwanta Road - Lot 27	135,792.11	133,764.34		
5	Upgrading of Kwabeng - Akropong Road (10km)	1,817,682.25	1,779,346.57		
12	Rehabilitation of selected Roads in Greater Accra Region	324,379.32	321,354.53		
7	Construction of Navrongo - Chuchuliga Road - Addendum 1	2,041,438.82	2,019,944.24		
1	Pothole Patching and Shoulders repairs works on Ejisu roundabout - Kuntense Road - Lot 49	208,458.49	207,842.15		
IPC	PROJECT	SUBMITTED AMOUNT GH¢	CORRECTED AMOUNT GH¢	SUBMITTED AMOUNT US\$	CORRECTED AMOUNT US\$
1	Regravelling of Asewase - Abooso Road - Lot 2	928,518.08	926,020.46		
13	Upgrading of Prampram - Anyaman (Latsinyo - Anyaman) Road (10km)	764,708.01	743,124.93		
2	Construction of 12 No. Speed Calming devices on Cape Coast - Twifo Praso Road - Lot 18	215,659.53	209,538.28		
2	Construction of 900mm X 900mm U - drain at Sakumono Estate Junction - Lot 3	22,491.75	21,190.51		
1	Construction of 1 No. Double 900mm diameter Pipe Culvert on Jirapa - Lawra Road - Lot 13	47,478.83	47,184.23		
2	Construction of 600mm X 600mm U - drain 80m at Sakumono Estate - Lot 17	20,576.32	19,436.09		
2	Construction of 900mm X 900mm U - drain 60m at Sakumono Estate - Lot 9	23,180.09	21,895.58		
2	Construction of 600mm X 600mm U - drain 80m at Sakumono Estate - Lot 19	20,381.31	19,251.90		
1	Construction of 10 No. speed tables on Goaso Ayomso Akrodie Road - Lot 5	165,163.21	164,751.88		
4	Partial reconstruction of Adoagyiri - Adeiso Road	11,261,116.57	11,248,932.81		
12	Pothole Patching and grading of high shoulders on Kororidua Mamfe & GHA bungalow Lot 39	390,127.50	386,375.75		
32	Rehabilitation of Ayamfuri New Obuasi - Asawinso Road Lot 2	3,608,658.00	2,830,269.76	682,011.89	465,125.37
31A	Rehabilitation of Ayamfuri New Obuasi - Asawinso Road Lot 2	970,812.28	963,292.45	20,422.67	13,751.92
1	Partial reconstruction of Navrongo Chuchuliga Tumu (34.23km) Road	4,087,968.15	3,663,428.84		
1	Roadline marking on Kumasi - Mampong - Ejura Road (km 0 - 18)	934,648.84	848,985.63		
1	Construction of speed calming Devices on Tanoso - Ewase - Domeabra - Nyamebekyere Appiakrom Road	27,121.33	17,772.88		
4	Upgrading of Tamale - Karaga Road (km 3.0 - 13.0)	1,671,789.35	1,654,942.72		
5	Upgrading/Reconstruction of Matrikasa Havedzi Road Lot 2	769,007.41	747,864.34		
2	Pothole Patching and grading of high shoulders on Ekye Amanfrom Maame Krobo Lot 13	641,668.50	637,815.21		
1	Pothole Patching and sectional resurfacing on Winneba Junction Eshiem - Lot 12	738,201.40	724,707.02		
1	Pothole Patching and Shoulders repairs works on Bogoso Prestea Road - Lot 5	226,960.26	225,159.56		

IPC	PROJECT	SUBMITTED AMOUNT GH¢	CORRECTED AMOUNT GH¢	SUBMITTED AMOUNT US\$	CORRECTED AMOUNT US\$
4A	Grading of Chicare Bimbilla - Salaga Road Lot 23	133,373.99	125,465.73		
24	Upgrading of Nadowli - Lawra Road Lot 8	2,468,161.09	2,386,357.64		
3A	Construction of Steel Bridge over river Kudage along Simbisi - Tatale Road - Lot 2	1,411,554.55	988,688.94		
1	Supply & Installation of materials for new works & 2 years maintenance of street light on Abedi Pele roundabout - Shishagu Nyankpala Highway Lot 2	3,912,139.84	3,852,139.40		
2	Pothole Patching and grading of high shoulders on Obomeng - Twenedurase Road (5.20km) - Lot 29	810,837.91	801,922.66		
1	Pothole Patching and grading of high shoulders on Subi Junction - New Abirem Road (km 32 - 38) - Lot 41	223,248.42	222,521.93		
1	Construction of Concrete U - drain at Ave Xevi (0.6m diameter) Lot 1, Relocation to Ave Dakpa Senior High Sec. Tech. Sch. Road	375,553.10	339,553.10		
1	Regravelling of Dorimon - Wachau - Ga Road - Lot 4	1,050,067.56	1,032,776.59		
1	Installation of Road Safety devices on Kumasi - Mampon Ejira Road Lot 1	339,317.56	313,332.54		
1	Pothole Patching and Shoulders repairs works on Akim Oda town Roads - Lot 20	381,361.50	377,958.43		
8	Construction of Navrongo Chuchuliga Tumu Road	2,033,692.99	1,794,751.72		
5B	Grading of Gushiegu Nyankpanduri Regional boundary Road Lot 16	107,224.77	106,737.30		
1	Construction of 10 No. speed tables on Techiman - Nkoranza Road - Lot 6	320,950.52	320,377.01		
1	Pothole Patching and Shoulders repairs works on Juansa - Asokore Road - Lot 19	85,632.46	82,584.13		
1	Demolish & Construct 1No. Single 900mm and 1 No. 1200mm diameter pipe on Tendaama Road	155,245.77	151,046.97		
1	Demolish & Construct 1No. Single 900mm and double 1200mm diameter pipe on Kadema - Naga Road Lot 15	171,322.02	153,322.02		
14	Upgrading of Berekum Seikwa - Nsawam Road	3,809,357.86	3,738,717.54		
1	Regravelling and spot improvement of Kintampo - Prang Road (km 11.0 - 16.0)	753,634.60	724,208.88		
3	Pothole Patching and grading of high shoulders on Ekye Amanfrom Maame Krobo Lot 13	590,285.80	583,390.44		
IPC	PROJECT	SUBMITTED AMOUNT GH¢	CORRECTED AMOUNT GH¢	SUBMITTED AMOUNT US\$	CORRECTED AMOUNT US\$
1	Pothole Patching and Shoulders repairs works on Kumasi (Suame) - Ejura Road - Lot 3	193,330.99	190,961.88		
6A	Upgrading of Dunkwa - Twifo Praso - Assin Fosu Road (20km)	139,662.47	136,828.45		
	<b>TOTAL</b>	<b>58,813,380.99</b>	<b>56,234,267.20</b>	<b>702,434.56</b>	<b>478,877.29</b>
	<b>SAVINGS</b>		<b>2,579,113.79</b>		<b>223,557.27</b>

Source: GHA Quantity Surveying Division September 2018



## **4.6 Road Safety & Environment Division**

The Division has responsibility for the following areas

- # Road Safety Unit
- # Environmental Management Unit
- # Axle Load Unit

### **4.6.1 Road Safety Unit**

The Unit undertook the following activities in the quarter under review through the Zonal Managers and two Engineers at the Head Office in charge of road furniture, road safety audit and accident investigation & analysis:

#### **4.6.1.1 Western & Central Region**

- # Road Safety assessment for cutting of some trees at Shama junc. along the N1 upon request by Augustine Assefuah.
- # Supervision of the construction of speed humps 11no. on the Apimanim – Elubo Road which has been relocated to Takoradi on the Urban Roads.
- # Review of inventories of road furniture on the upgrading of Tarkwar – Aboso – Huni valley – Damang (Lot 1, Lot2, & Lot 3)
- # Review of speed calming design presented by Ghana Gas intending to construct speed calming device on the highway.
- # Review of speed calming device presented by Goldfields Ghana in relation to the project; (upgrading of Tarkwar – Aboso – Huni valley – Damang)
- # Road Safety assessment for Right Of Way as per request from Amaja Oilfields Limited.
- # Inspection of work zone safety on all sites awarded for the installation of road safety devices to assess their performance in relation to safety.

#### **4.6.1.2 Eastern & Volta Region**

- # Supervised the construction of speed tables on Denu – Kedzi Road.
- # Supervised the installation of Roadline markings on Dabala Jn – Srogbe Road (km 0-7)
- # Supervised installation of Road line markings on Dabala Jn – Srogbe Road (km 7-15)

#### **4.6.1.3 Ashanti & Brong Ahafo Region**

- ✚ Installation of safety devices on Kuntense – Abono Road completed.
- ✚ Road line marking on Sunyani Road completed.
- ✚ Construction of rumble strips at Akomadan on-going.
- ✚ Road line marking on Kumasi – Ejura Road on-going.
- ✚ Installation of Street lights on Tech Jnc – Ejisu and Suame Roundabout – Afrancho completed and substantially taken over.

#### **4.6.1.4 Northern, Upper East & Upper West Regions**

##### **Supervision of the under listed projects;**

- ✚ Construction & Installation of 5no. Road Safety Devices on Tamale – Bupe N10 Highway Road (Km. 0.200, Km. 0.800, Km. 1.700, Km. 2.00 & Km. 2.700) – Lot 1.
- ✚ Construction of Traffic Calming Devices at (Km. 2.00 – 10.00) on Tamale – Salaga Road – Lot 6
- ✚ Construction of Traffic Calming Devices at (Km. 10.60 – 28.80) on Tamale – Salaga Road – Lot 7
- ✚ Supply and Installation of Materials for New Works and Two Year Maintenance of Streetlights on the Abedi Pele Roundabout to Shishagu - Nyankpala Highway - Lot 2

##### **Inventory of Road Signs, Line Marking, Crash Barriers and Speed Tables on the under listed roads:**

- ✚ Tamale – Salaga Road
- ✚ Tamale – Yendi Road
- ✚ Tamale – Tolon Road
- ✚ Tamale – Kumbungu Road
- ✚ Walewale - Nakpanduri - Regional Boundary Road
- ✚ Banda Nkwanta - Bui, Teselima - Jama & Damongo Town Roads
- ✚ Yendi - Zabzugu & Yendi - Saboba Roads

#### **4.6.1.5 Head Office Region**

- ✚ Construction supervision of ongoing 4 street lighting project stated below:
  - ✚ Mallam Junction – Kasoa - Greater Accra Region- Pending
  - ✚ Patang Junction – Aburi – Greater Accra Region- Pending
  - ✚ Abedi Pele roundabout – Shishagu – Nyankpala Road – Northern Region- Pending
  - ✚ KNUST junction - Kumasi – Ashanti Region- Pending



**Retro-reflectivity test on:**

- ✦ Installation Of Road Safety Features On Mallam – Winneba And George Walker Bush N1 Highway – Rod Line Marking
- ✦ Installation Of Road Safety Devices & Roadline Marking On Dabala – Srogbe Road (Km 0 + 20 – 0+ 40km) Lot 18.
- ✦ Safety Assessment along the Konongo - Odumase Section of Accra-Kumasi Highway
- ✦ Review of document on Construction of Single Gauge Railway Line from Tema to Akosombo on Engineering, Procurement and Construction (epc) basis – construction RCC box road under Bridge (rubs) at km 33+758 and 55+698
- ✦ Safety assessment at Tema toll booth end of Tema Motorway

**4.6.2 Environmental Management Unit**

The Unit is responsible for integrating Environmental and Social issues into the road/bridge planning, development and maintenance processes. The Unit ensures that EIA/SIA are considered at the initial planning stages, develop guidelines, checklist and procedures for the EIA/SIA processes, coordinates with consultants to ensure that the EIA/SIA procedures are followed in obtaining permits and also supervises and monitors during the preconstruction, construction and post construction stages.

The Unit also continues to educate Contractors during site meetings on the need for them to develop and adhere to their company's' ESMPs to help implement environmental and social issues on their projects. The ESMPs are monitored through site visits and project meetings.

**4.6.2.1 Environmental and Social Impact Assessment (ESIA)**

The Unit continued to review, revise and update environmental and social impact assessment reports for road projects submitted by Consultants. In addition to the above, officers of the unit undertook supervision and monitoring of Environmental and Social Management Plans (ESMP) on-going development and maintenance projects.

**4.6.2.2 Stakeholder Engagement on the detailed design for the Improvement of south section of National Road N8 in the Central Region**

The Unit also participated in a 2-day Stakeholder's Forum on the JICA funded project for Improvement of Ghanaian International Corridors. This forum was organised as part of the environmental and social impact assessment procedures conducted during the detailed design stage of the south section of National Road No. 8 between Assin Praso and Assin Fosu.

**4.6.2.3 Implementation Support Missions**

The Unit joined the World Bank Country Director for a familiarisation tour to the Bank funded projects in the western region. The World Bank team visited the Agona Junction-Elubo and the Ayanfuri-Asawinso road projects to interact with the District Assembly officials,

community leaders and Project Affected Persons (PAPs) to know the impacts of the projects on the communities and the PAPs.

#### **4.6.3 Axle Load Control Programme**

Seventeen (17) out of the Eighteen (18) stations were operational during the quarter under review.

The statuses of the Permanent Weighbridge Stations are provided in Table 29

##### **4.6.3.1 Mobile Vans**

Four (4) out of the Eight (8) Mobile Weighing Vans were operational during the reporting period. These vans operated in the Ashanti, Western, Brong Ahafo and Northern Regions. The remaining Four (4) had challenges with the vehicles and the weighing equipment and are in Accra for repairs, calibration and verification.

##### **4.6.3.2 High Speed Weigh In Motion (HSWIM)**

Nine (9) HSWIM have been installed at Tema, Dawa, Nsawam, Elmina, Bolgatanga, Agona Junction, Boankra, Akom and Ngleshie-Amanfrom. Four (4) out of the nine sites, namely; Ngleshie Amanfrom, Dawa, Elmina and Bolgatanga functioned effectively during the period under review.

##### **4.6.3.3 Portable Weighing Scales**

Portable scales were deployed at Doboro and Adeiso for 24-hour monitoring of axle loads on the Ofankor – Nsawam and Adoagyiri - Adeiso Roads respectively

##### **4.6.3.4 Axle Load Control at the Ports**

The single Axle Weighers located at the Tema and Takoradi Ports were operational during the reporting period.



**Table 29: Status of Permanent Weighbridge Stations (PWS)**

<b>Location</b>	<b>Strategy</b>	<b>Status</b>
1. Tema	Corridor/cordon	Operational.
2. Afienya	Corridor/cordon	Operational. Replacement of full-size weighbridge required.
3. Asuoyeboah	Corridor/cordon	Operational. Parking area required
4. Yapei	Corridor	Operational.
5. Bolgatanga	Corridor	Not Operational. Maintenance of weighbridge equipment required.
6. Elmina	Corridor	Operational
7. Agona Junction	Corridor	Operational. Additional parking space required.
8. Bogoso	Corridor /Hotspot	Operational. Rehabilitation of driveway and parking area required urgently.
9. Akom	Corridor /cordon	Operational.
10. Boankra	Corridor/cordon	Operational.
11. Akatsi	Corridor	Operational. Rehabilitation of parking area and driveway required.
12. Mim	Hotspot	Operational.
13. Sefwi Bekwai	Hotspot	Operational. Mobile van in use
14. Asokwa	Corridor	Operational. Renovation works halted due to inadequate funding.
15. Jema	Corridor	Operational
16. Damango	Corridor	Operational
17. Sawla	Corridor	Operational
18. Aflao Border	Hotspot	Operational. Operations however stalled after the attack of the staff at the station by some transporters and freight forwarders on 2 <sup>nd</sup> October.

**Source: Road Safety & Environment Division September 2018**

#### **4.6.3.5 Statistics from the Axle Load Stations**

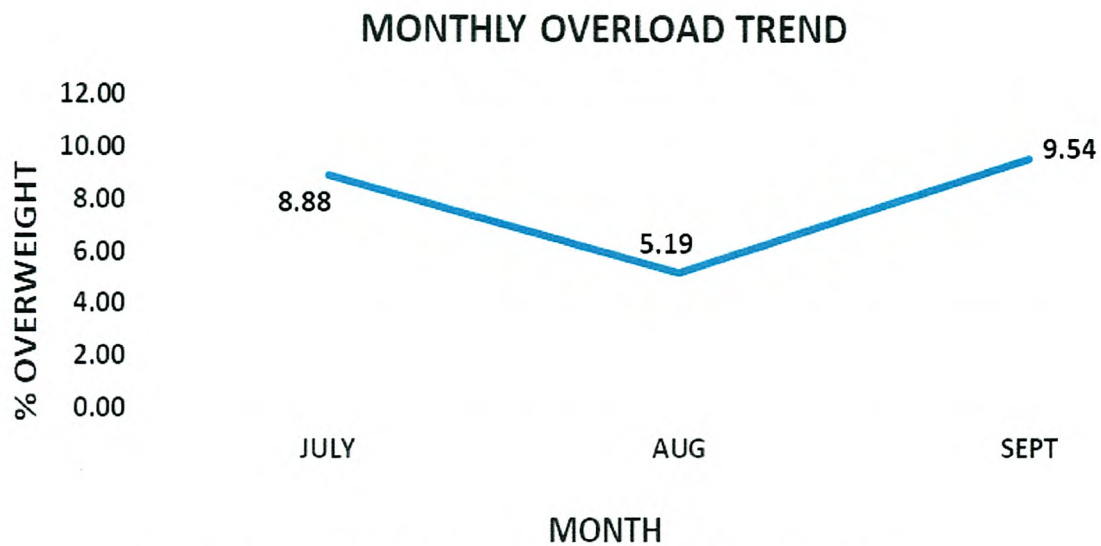
A total number of 75,255 trucks were weighed during the quarter under review. Out of this, 5,596 trucks were overloaded representing 7.44%. The analysis of data from the Permanent Weighbridge Stations is provided in Figure 5 and 6. The data used for the analysis is gross weights of vehicles weighed at all the permanent weighbridge stations. The analysis showed that, 7.44% of total vehicles weighed were overloaded as against 5.10% recorded in the second quarter of 2018.

The Figure 5 illustrates the monthly overloading trend from July to September, 2018 at the end of July, 8.88% of the vehicles weighed were overloaded. However, at the end of August, there was a decline to 5.19% and an increment to 9.54% recorded at the end month of September. However, the average percentage of overloaded vehicles at the end of the 3<sup>rd</sup> quarter was 7.87%.

The levels of overloading at the permanent weighbridge stations along the various corridors during the second quarter are presented in Figure 6 below. The trend showed that, the level of monthly overloading recorded at all the permanent weighbridge stations were generally below 25% of the vehicles weighed with the exception of the Akom and Aflao stations. Akom station recorded the highest percentage of monthly overloading that is 184 overloaded vehicles out of 414 weighed in July representing 44.44%. The Aflao station recorded 34.71% in August when it started operation and an increase to 40.90% at the end of September. Education and sensitization as well as monitoring will be intensified to reduce the general increasing trend of overloading.

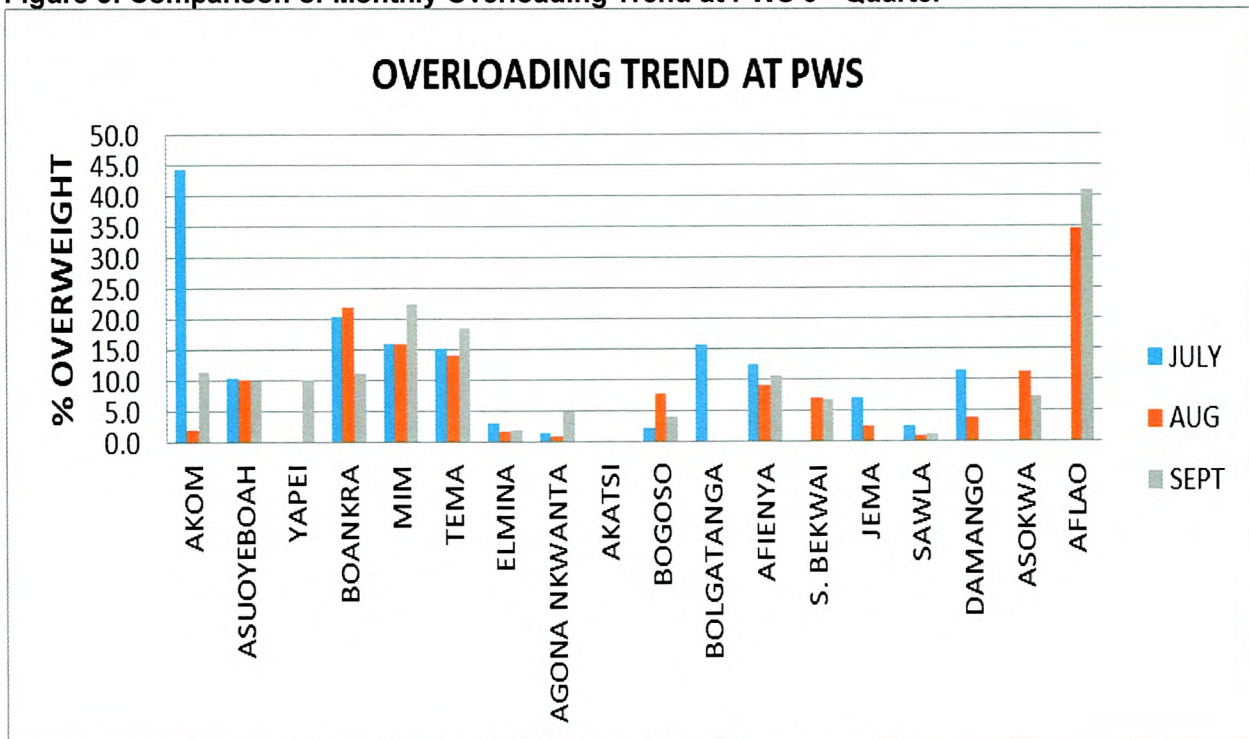


Figure 4: Monthly Overloading Trend – 3<sup>rd</sup> Quarter, 2018



Source: Road Safety & Environment Division September 2018

Figure 5: Comparison of Monthly Overloading Trend at PWS 3<sup>rd</sup> Quarter



Source: Road Safety & Environment Division September 2018

## **4.7 Survey & Design Division**

The following areas of activities that the Division covered:

- Topographical Survey
- Road Geometric Design
- Right-of-Way Clarification
- Review and Checking of Design Drawings
- Site Meeting Attendance
- Site Inspections

### **4.7.1 Activities Carried Out in the Quarter**

#### **Right-of-Way Clarification**

A total of seven (7) Right-of-way clarifications were carried out for developers along the Accra - Nsawam, Tema - Akosombo, Tetteh Quarshie - Ayi Mensah, Accra - Ada and George Walker Bush Roads.

#### **Survey and Design activities were carried out for the following roads:**

- ✚ Design of Akim Oda by-pass
- ✚ Design of Anyinam – Kwabeng

#### **Review and Checking of Design Drawings**

- ✚ Reconstruction of Nkwanta - Dambai Road

#### **✚ Field Verification**

Reconstruction of Nkwanta - Dambai Road



## CHAPTER FIVE

### 5.0 Conclusion

As stated in the last report, The Ghana Highway Authority in its 2000 – 2015 strategic plan proposed to achieve a road network condition mix of 70% good, 20% fair and 10% poor. With a projected improvement rate of about 7% per annum, it was envisaged that by the close of December 2015, the target road surface condition mix of 70% good, 20% fair and 10% poor would be achieved with adequate injection of resources. The road condition mix for the year 2015 stood at 58% good, 36% fair and 7% poor.

Due to inadequate funding from the Central Government in the area of expenditure under Goods and Services, Salary and Non-Salary Related Allowances, the IGF potentials within the jurisdiction of the Ghana Highway Authority (GHA) should be strictly and assiduously harnessed. This is to ensure that the Ghana Highway Authority gets adequate funding to meet expenses to reduce tension in the System.

The Government has decided to introduce Revenue capping for Agencies including GHA to reduce Internally Generated Revenue to these Agencies.

To this end, GHA will have a reduction of about 34% of its IGF given to the Central Government. The effect is that, GHA's financial resource envelope will be affected greatly. This will lead to further accumulation of debts to Service Providers and also affect the operations of the Ghana Highway Authority.

### 5.1 The Way Forward

The Ghana Highway Authority as always will strive to continue to uphold its set objectives, which are measurable, relevant, specific, achievable and consistent to its Mission statement. The following objectives have been set out in the way forward:

- ✦ Enforce Axle Load control laws to protect the investments made in roads.
- ✦ Open new Toll stations to ensure that funds are readily available for road maintenance.
- ✦ Reducing Accident Fatalities on the trunk road network through improvement of safety measures.
- ✦ Reducing Travel Time on heavily trafficked trunk road sections through grade separation.
- ✦ Ensuring that road development and maintenance programmes are executed with environmental and social mitigation measures.
- ✦ Adequately recruiting, training and motivating all categories of requisite staff and providing the needed logistics to undertake the services.
- ✦ Take practical steps to reduce energy consumption.

### Key Performance Indicators

Ghana Highway Authority under the State Enterprise Commission, Performance Contract signed between the GHA and Government of Ghana is evaluated at the end of the

Performance Contract period. The evaluation is based on four areas of performance. These are in the Financial/Economic, Efficiency/Productivity, Dynamic Effects and Management/Projects areas.

A performance index score, which is a measure of the overall performance using agreed performance indicators and weights are given to them based on their relative importance. The scoring process is therefore based on the Financial/Economic, the Dynamic Effects and Management Improvements/Projects indicators using the negotiated weights.

The GHA evaluates its performance at the end of every quarter following the four areas of performance. Table 30 below shows the status of GHA Performance Matrix categorized into the four areas of performance as at the end of the 3<sup>rd</sup> quarter 2018.



**Table 30: Status of 2018 Performance Matrix Quarterly Monitoring Indicators (3<sup>rd</sup> Quarter)**

Performance Monitoring Indicators	Units	Targets (Approved)	Jan-March (Actual)	April-June (Actual)	July-Sept. (Actual)	Oct.-Dec. (Actual)	% Achieved as at June 2018	Remarks
<b>A. Financial/Economic</b>								
<b>1. Total Revenue of which</b>								
(a) Compensation of Employees	GH ₵	25,675,286.00	6,023,653.05	12,240,141.18	20,368,807.77	0.00	79.33	
(b) Goods and Services	GH ₵	585,060.00	0.00	117,011.35	0.00	0.00	20.00	
(c) (i) Road Fund	GH ₵	80,000,000.00	0.00	6,618,954.50	8,255,095.50	0.00	10.32	
(ii) Road Fund Arrears (31st Dec, 2017)	GH ₵	405,011,353.80	65,637,702.05	127,406,815.59	0.00	0.00	31.46	
(d) Consolidated Fund (arrears as at 31st Dec, 2017)	GH ₵	968,485,430.00	46,400,979.99	155,864,342.79	286,401,699.31	0.00	29.57	
(e) Donor Funds	GH ₵	126,178,931.00	75,538,199.58	82,706,555.58	90,223,316.97	0.00	71.50	
(f) Other funds- Annual Budget Funding Amount (ABFA)	GH ₵	89,842,952.00	0.00	4,479,073.63	30,403,538.77	0.00	33.84	
(g) Total Revenue	GH ₵	1,695,779,012.80	193,600,534.67	389,432,894.62	435,652,458.32	0.00	22.96	
(h) Internally Generated Revenue	GH ₵	15,129,959.00	3,058,064.00	7,054,472.72	10,280,416.96	0.00	67.95	
<b>2. Internally generated revenue / Total Revenue</b>	%	0.01	0.02	0.02	0.02		0.02	
<b>3. Internally generated revenue / Recurrent Expenditure</b>	%	0.24	0.18	0.00	0.50		0.50	
<b>B. Efficiency/Productivity</b>								
1. Staff costs/Total Revenue	%	0.02	0.03	0.03	0.05		0.05	
2. Staff costs/Internally Generated Revenue	%	1.70	1.97	1.74	1.98		1.98	
3. Improve trunk road condition mix : Good	%	55	57	57	57		57	2017 Road Condition report
: Fair	%	36	36	36	36		36	
: Poor	%	9	7	7	7		7	
4. Labour strength	No.	1,700.00	1,275.00	1,256.00	1,215.00		1,215.00	
<b>C. Dynamic Effects</b>								
<b>1. Staff training</b>								
(a) Submission of 2017 budgeted training programme	Month	February	February					Submitted
(b) Implementation of budgeted training programme	%	100	0.08	0.17	0.17		0.17	
<b>2. Corporate Planning</b>								
Submission of updated Corporate Plan (2017 – 2037)	Month	November						2017-2037 Strategic Plan completed and submitted.
<b>3. Road Maintenance</b>								
(a) Submission of Road Maintenance & Minor works Programme	Month	November						Submitted
(b) Implementation of i) Routine Maintenance Programme	%	80	58.65	227.79	279.41			
ii) Periodic Maintenance Programme	%	80	30.58	39.78	100.24			
iii) Minor works Programme	%	40	137.49	175.71	1,259.39			
<b>4. Road Safety Management</b>								
(a) Submission of 2018 Road Safety Management Programme	Month	January	-	-	-			submitted
(b) Implementation of Road Safety Management Programme	%	100	0	0	0.00		0.00	No funds released
<b>D. Management Improvement/Projects</b>								
1. Submission of Quarterly Reports	Weeks	6	8	-	-			
2. Conformance to SEC Report Format	No.	6	6				100.00	Conforms to SEC report format
3. Submission of 2017 Audited Accounts	Month	March	-	-	-			2017 Draft Financial Statement has been submitted to the External Auditors.
4. Submission of 2018 Draft Performance Contract & Budget	Period	October	-	-	-			Submitted
5. Submission of Approved Board of Directors Minutes	Weeks	1	-	-	-			Submitted
6. Submission of filled out Integrated SOE Database forms	Month	June	-	-	-			
7. Accuracy & Completeness of filled out SOE Database forms	%	90	-	-	-			
8. Holding of Annual Open Day	Month	August	-	-	-			Pending
9. Submission of 2018 Procurement Plan	Month	December	-	-	-			Submitted

**Source: GHA Planning Division September 2018**

## **5.2 Constraints**

### **Reduced Budget Allocation**

Since 2012, the Subvention release to GHA has been dwindling, from the beginning of the year to date the GHA has not received any subvention from Ministry of Finance for Goods and Services.

The budget for IGF is GH¢15m and GHA continues to pay 34% of the IGF money to the Ministry of Finance as part of the government policy.

### **Inadequate Staff**

The current staff strength is 1,275 as against the establishment of 2,526. This means the GHA is operating at 50% capacity which is a great toll on some Technical Staff.

The technical staffing situation has become critical in some divisions and regional offices. Most Divisions are under-staff in both technical and Non-Technical Staff.

Should this trend continue without vigorous implementation of the GHA replacement plan, the staff will reduce so drastically that the GHA may not be able to meet its strategic objectives in the foreseeable future.

Other major constraints facing the GHA are categorized below:

- ✦ Over age vehicles in all the Departments of the GHA.
- ✦ Urgent need for Laboratory Equipment for Materials Division to carry out test for the public to generate IGF and as well for its normal operations.
- ✦ Poor Contractor capacity and performance.
- ✦ Delay in payment of compensation due to long valuation procedures and inadequate budgetary allocation.
- ✦ Inadequate release of funds for Recurrent, Investment and Capital Investments.



### **5.3 Recommendations**

#### **Recruitment of Staff**

The GHA should be given approval to recruit and train all manner of staff needed, to be able to meet all its strategic plans.

#### **Training of Staff**

There is a need for periodic technical training of all categories of staff within the Authority through local/overseas short courses, workshops and further studies, to improve their skills to enhance their output and to discharge the various multifaceted tasks that must be addressed by the GHA.

#### **Hardware and Software Needs**

There is an urgent need for the Authority to acquire state of the art software for most of the Divisions to bring efficiency in work output.

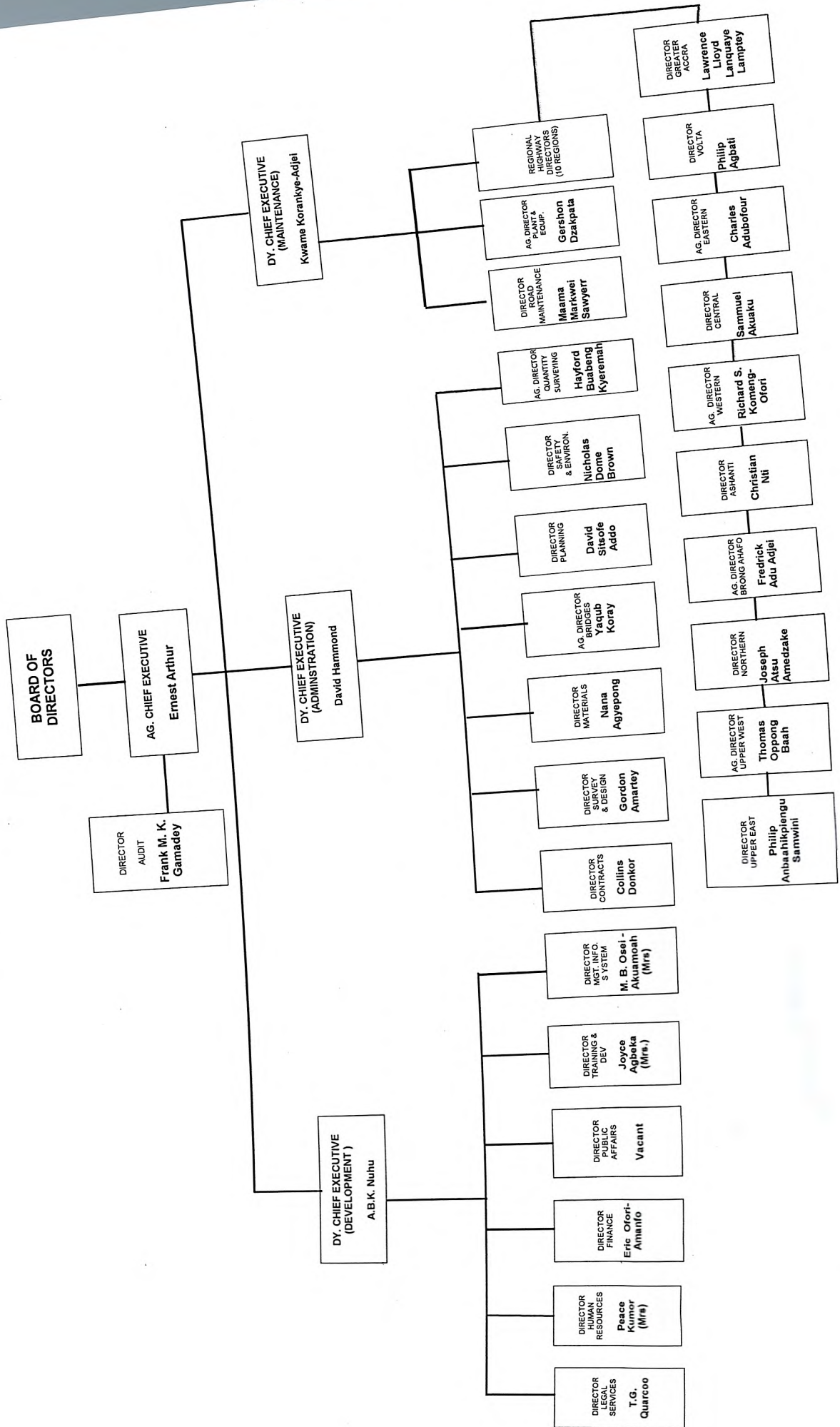
### **5.4 Conclusion**

The Authority will continue with its programs for the maintenance, rehabilitation and reconstruction of sections of the road network to ensure reasonable level of service. The Ghana Highway Authority requires support from our development partners and GOG to be able to implement planned and approved programmes.





# ORGANIZATIONAL STRUCTURE OF GHANA HIGHWAY AUTHORITY







GHANA HIGHWAY AUTHORITY  
DEVELOPMENT PROJECTS  
PROJECT STATUS AS AT 31ST AUGUST, 2018

NO	REGION	CONTRACT DESCRIPTION	LENG(KM)	SOURCE OF FUNDING	CONTRACTOR	AWARD DATE	START DATE	COMPLETION DATE	REVISED COMPLETION DATE	CONTRACT AMOUNT		REVISED CONTRACT SUM		TOTAL AMOUNT CERTIFIED TO DATE						TOTAL PAYMENT MADE TO DATE				OUTSTANDING PAYMENT		COST TO COMPLETE		PHYSICAL PROGRESS	FINAN PROGRESS	TIME ELAPSED %	REMARKS		
										FC (million)	LC (million)	FC (million)	LC (million)	WORKS		FLUCTUATIONS		CLAIMS		FC (million)		LC (GH(million))		FC (million)	LC (GH(million))	FC (million)	LC (GH(million))					FC (million)	LC (GH(million))
														FC (million)	LC (million)	FC (million)	LC (million)	FC (million)	LC (million)	FC (million)	LC (GH(million))	FC (million)	LC (GH(million))										
1	UER	Construction of Bolgatanga - Bawku Pollmakom Road (116.1Km)	116.1	GOG	Construtora Queiroz Galvao	14-Sep-16	7-Dec-16	7-Jun-19	-	0.00	612.744	0.00	612.744	0.00	214.54	0.00	5.27	0.00	0.00	0.00	0.00	0.00	0.00	0.00	0.00	0.00	19.45	28.14	66.67	Contractor suspended works in 12th March, 2018 for non-payment and has since not been on site.			
2	UWR	Construction of Wa – Walewale Road (57Km)	57	GOG	Mawums Limited	1-Aug-16	12-Sep-16	11-Sep-19	-	0.00	166.328	0.00	166.328	0.00	46.21	0.00	3.96	0.00	0.00	0.00	0.00	0.00	0.00	0.00	0.00	45.913	0.00	31.06	27.65	64	The Contractor suspended works on 30th April, 2018 due to non-payment.		
3	WR	Construction of Enchi – Dadieso Road	30	GOG	Big Aidoo Construction, Limited.	21-May-10	16-Aug-10	16-Aug-12	15-Nov-12 15-Nov-14	0.00	49.147	0.00	50.155	0.00	39.93	0.00	0.00	0.00	0.00	0.00	0.00	0.00	35.37	0.00	0.00	0.00	9.75	63.82	80.56	188.24	The Contractor has abandoned the site since October, 2015		
4	UW	Construction of Wa-Han Road	30	GOG	P & W Ghanem Ltd.	30-Sep-10	15-Apr-11	14-May-13	14-Nov-14 13-Jun-17 May, 2018	0.00	33.976	0.00	33.976	0.00	27.325	0.00	0.00	0.00	0.00	0.00	0.00	0.00	20.525	0.00	9.423	0.00	6.651	86.0	-	103.0	Laying of base completed.Laying of Primer Seal in progress. EoT of 11months was granted up to 12th May, 2018.		
5	CR	Construction of Twifo Praso-Dunkwa Road	10.0	GOG	K. B. Annan Limited	10-May-10	17-Jun-11	16-Jun-13	16-Dec-14	0.00	35.193	0.00	35.193	0.00	17.215	0.00	0.00	0.00	0.00	0.00	0.00	0.00	8.604	0.00	9.55	0.00	0.00	52.9	-	204.8	Contractor is currently not working due to non-payment. Length of Project revised from 25km to 10km. EoT of 48months approved up to 16-Dec-18		
6	UW	Construction of Navrongo Chuchulga-Tumu Road (32.6Km). Addendum No. 1 to the Construction of Navrongo-Tumu Road (25Km)	32.6	GOG	Mawums Limited	5-Sep-14	21-Oct-14	21-Oct-16	20-Dec-17 20-Apr-18 20-Oct-18	0.00	73.060	0.00	73.060	0.00	24.89	0.00	4.71	0.00	2.44	0.00	0.00	0.00	23.28	0.00	3.69	0.00	43.493	42.75	43.5	109.3023	Contract Period Expired, EOT of Six months approved up th 20th October, 2018. Works have slowed down		
7	VR	Construction of Ho - Fume Road (Km 0-7) and (Km 28.7-40.1)	18.4	GOG	Rolider	14-Jul-10	1-Sep-10	31-Aug-12	1-Mar-13 8-Mar-13 31-Dec-13 31-Dec-14 31-Dec-15	0.00	41.211	0.00	45.885	0.00	77.857	0.00	0.00	0.00	0.00	0.00	0.00	0.00	61.942	0.00	15.938	0.00	0.00	93.00	-	147.6	Substantial Taking Over Inspection for the main works was held on the 17-February,2016. Works on Likpe - Tudome road, under V.O. No. 4, have stalled due to non- payment of IPCs issued for accomplished works. Final Taking Over of Ho-Fume is stalled due to non-payment.Contractor is requesting for EoT for V.O. 4		
8	BAR	W. -chi - Sampa Phase 2, Nsawkaw - Nsawkaw Section	26.0	GOG	J. Adom Limited	2-Jul-08	27-Aug-08	26-Feb-10	29-Aug-10 29-Feb-12 29-Aug-12 29-Aug-13	0.00	17.874	0.00	17.874	0.00	15.271	0.00	0.00	0.00	0.00	0.00	0.00	0.00	15.271	0.00	0.00	0.00	0.00	80.0	85.44	200.0	Contractor's request since 2014 for review of rates for interest calculations forwarded to MRH.Contractor is currently not working		
9	VR	Construction of Roads and other Infrastructural Amenities for the University of Health and Allied Sciences at Sokode Lokoe near Ho - Volta Region	17.0	GOG	Ussuya GH Limited	26-Nov-12	4-Jan-13	4-Jul-14	-	0.00	41.600	0.00	41.600	0.00	7.23	0.00	3.54	0.00	0.00	0.00	0.00	0.00	13.42	0.00	1.06	0.00	38.4	21.34	372.2222	Slow Progress on Site due to delayed payment			
10	GAR	Construction of Tunnel Under the Accra - Tema Motorway to Link East Legon and Spintex Road	N/A	GOG	Sonitra Limited	1-Aug-17	1-Aug-17	31-May-18	-	0.00	14.815	0.00	14.815	0.00	14.82	0.00	4.502	0.00	0.00	0.00	0.00	14.401	0.00	0.00	5.66	0.00	99.00	90.00	100.00	Variation Order No.1 is approved by the Ministry and the CTRB. Substantial Taing Over inspection was done on 28th August , 2018			
11	VR	Reconstruction of Nkwanta - Dambai Road (50.0Km)	50.0	GOG	City Construction	2-Aug-16	2-Sep-16	1-Sep-19	-	0.00	157.000	0.00	157.000	0.00	45.71	0.00	4.78	0.00	0.00	0.00	0.00	0.00	2.744	0.00	42.96	0.00	36.41	40.9	63.89	Slow Progress on Site due to delayed payment			
12	VR	Reconstruction of Nkwanta - Old Damanko Road (Km 50.3 - 62.3)	12.0	GOG	First Sky Ltd	29-Jul-16	2-Sep-16	1-Apr-18	-	0.00	73.545	0.00	73.545	0.00	14.23	0.00	0.821	0.00	0.00	0.00	0.00	0.00	0.00	0.00	13.55	0.00	11.93	16.93	121.05	Reduced work since August 2017.			
13	NR/VR	Reconstruction of Kete Krachi – Kpandal – Nakpanyili Road (Km 51 – 88) and Kpandal Town Roads (3Km)	40.0	GOG	First Sky Ltd	29-Jul-16	12-Sep-16	11-Sep-18	-	0.00	115.612	0.00	116.119	0.00	43.55	0.00	2.37	0.00	0.00	0.00	0.00	0.00	23.416	0.00	13.814	0.00	57.04	45.17	95.83	Contractor is currently not working due to non-payment.			
14	NR/VR	Reconstruction of Kete Krachi – Kpandal – Nakpanyili Road (Km 88 – 123) & Wulensi Town Roads (3 - 38Km)	38.0	GOG	Jiang Xi Nonferrous Eng. & Const. Ltd	6-Sep-16	3-Oct-16	2-Oct-19	-	0.00	121.465	0.00	121.973	0.00	36.78	0.00	5.26	0.00	0.00	0.00	0.00	0.00	0.00	0.00	4.510	0.00	44.3	40.42	61.1	Currently, earth works are ongoing			
15	BAR	Berekum - Sampa	56.0	GOG	J. Adom Limited	29-Mar-07	5-Feb-07	5-Feb-10	11-Feb-11 11-Feb-12 2-Nov-12	0.00	41.541	0.00	46.478	0.00	51.53	0.00	0.00	0.00	0.00	0.00	0.00	0.00	51.53	0.00	0.00	0.00	78.3	-	201.4	Contractor has abandoned the works. Contractor's request for review of rates forwarded to MRH for consideration. Contractor to resume works soon.			
16	ASHR	Bomfa Junction - Asawa - Bekwai, Bekwai - Ampaha - Asawa	36.2	GOG	Ussuya Ghana Ltd.	3-Jun-08	30-Jun-08	30-Jun-10	21-Mar-12 1-Feb-14 31-Dec-14 19-Jun-15	0.00	21.471	0.00	32.06	0.00	32.32	0.00	10.86	0.00	0.00	0.00	0.00	0.00	34.15	0.00	9.04	0.00	98.9	106.51	147.0	Contractor is currently not on site.			
17	ASHR	Bekwai - Ampaha - Asawa (Addendum No. 1)	20.0	GOG	Ussuya Ghana Ltd.	7-Mar-08	17-Dec-08	17-Dec-09	17-Sep-11 31-Dec-14	0.00	12.823	0.00	17.57	0.00	20.94	0.00	15.63	0.00	0.00	0.00	0.00	0.00	20.94	0.00	15.63	0.00	91.2	119.17	161.1	Contractor is currently not on site.			

NO	REGION	CONTRACT DESCRIPTION	LENG(KM)	SOURCE OF FUNDING	CONTRACTOR	AWARD DATE	START DATE	COMPLETION DATE	REVISED COMPLETION DATE	CONTRACT AMOUNT		REVISED CONTRACT SUM		TOTAL AMOUNT CERTIFIED TO DATE				TOTAL PAYMENT MADE TO DATE				OUTSTANDING PAYMENT		COST TO COMPLETE		PHYSICAL PROGRESS	FINAN PROGRESS	TIME ELAPSED %	REMARKS			
										FC (million)	LC (million)	FC (million)	LC (million)	WORKS		FLUCTUATIONS		CLAIMS		TOTAL PAYMENT MADE TO DATE		OUTSTANDING PAYMENT		COST TO COMPLETE								
														FC (million)	LC (million)	FC (million)	LC (million)	FC (million)	LC (million)	FC (million)	LC (GH¢million)	FC (million)	LC (GH¢million)	FC (million)	LC (GH¢million)							
REHABILITATION																																
18	BAR	Rehabilitation of Kumasi - Sunyani Road (Sunyani - Duayaw Nkwanta Section) 35km	35.0	GOG	Nkwantabisa Engineers Ltd	3-Nov-16	28-Feb-17	28-Feb-18	-	0.00	103.397	0.00	103.397	0.00	0.00	0.00	0.00	0.00	0.00	0.00	0.00	0.00	0.00	0.00	0.00	0.0	-	150.0	New project, Contractor was expected to mobilize to site by February, 2017 but has failed to do so.			
19	ER	Rehabilitation of Apedwa - Bonsu Road	23.0	GOG	Core Construction Ltd.	5-Jul-16	2-Sep-16	1-Mar-18	-	0.00	53.527	0.00	53.527	0.00	39.278	0.00	1.997	0.00	15.62	0.00	0.00	0.00	0.00	37.314	0.00	2.00	76.3	-	127.8	V.O no.2 has been sent to MRH for approval. Contractor has not been on site since June 2017.		
20	ER/GAR	Rehabilitation of Ofankor – Nsawam Dual Carriage Road (33.4km)	22.4	GOG	Maripoma Enterprise Ltd	28 Jul 16	14 Sep 16	13-Sep-18	-	0.00	105.848	0.00	105.848	0.00	0.00	0.00	0.00	0.00	0.00	0.00	0.00	0.00	0.00	0.00	0.00	0.0	-	95.8	Scope of works to be revised from Asphaltic Overlay to rehabilitation. Request for approval for revision of scope of works sent to MRH.			
UPGRADING																																
21	ASHR	Sectional Repairs & Asphaltic Overlay on Abukwa - Tepa Road	20.0	GOG	Attachy Construction Limited	16-Sep-16	04-Oct-16	03-Mar-19	-	0.00	108.514	0.00	0.00	0.00	0.00	0.00	0.00	0.00	0.00	0.00	0.00	0.00	0.00	0.966	0.00	106.688	0.67	3.89	75.9	Contract behind schedule		
22	NR	Upgrading of Tumu - Han - Lawra Road (Km 0-60)	60.0	GOG	Greenhouse Int. Dev't (GH) Ltd	01-Aug-16	10-Aug-16	09-Aug-19	-	0.00	181.915	0.00	0.00	0.00	37.62	0.00	26.94	0.00	0.66	0.00	0.00	0.00	7.87	0.00	28.79	0.00	144.974	20.31	25.31	66.67	Works have been suspended due to non payment of IPC's	
23	WR	Upgrading to Bitumen Surfacing of Elubo - Enchi Road (N12) Phase 1 (KM 0 - 17.6)	17.6	GOG	Eagle Star Enterprise Limited	07-Sep-11	16-Nov-11	16-May-14	16-Mar-2015 16-May-2018	0.00	30.946	0.00	42.857	0.00	21.07	0.00	5.27	0.00	1.40	0.00	0.00	26.668	0.00	0.00	4.822	0.00	42.857	57.53	61.31	103.8	No work done at site for the past 12 months due to cash flow problems.	
24	WR	Construction of Elubo - Enchi Road Phase 2 (km 17.6 - 37.6)	20.0	GOG	Eagle Star Enterprise Limited	07-Aug-14	06-Oct-15	06-Oct-17	08-Aug-18	0.00	68.353	0.00	69.070	0.00	6.37	0.00	2.90	0.00	7.98	0.00	0.00	7.979	0.00	0.00	6.330	0.00	85.759	8.11	13.26	102.1	GHC 16,688,334.16 meant for Concrete works was omitted and the problem has still not been solved. No work done for the past 12 months due to cash flow problems.	
25	WR	Sefwi Bekwai - Eshiem - Asankragwa, Km 10-56	46.0	GOG	Midwest Contract Works	11-Sep-08	24-Sep-08	23-Sep-11	22-Sep-12 31-Dec-15	0.00	43.149	0.00	65.832	0.00	65UKL	0.00	0.00	0.00	0.00	0.00	0.00	46.715	0.00	0.00	9.541	0.00	0.000	54.0	84.68	123.0	Works are on-going.	
26	VR	Emergency Works for the Upgrading of Ho-Adidome Road 67.0-79.8KM & Adaklu Xelekpe - Abuadi Road 5KM (Lot 1)	17.8	GOG	Ussuya Ghana Ltd	22-Apr-10	17-Jun-10	16-Mar-11	15-Dec-11 31-Dec-14 31-Jan-15	0.00	22.389	0.00	22.389	0.00	18.70	0.00	8.10	0.00	0.00	0.00	0.00	0.00	25.78	0.00	0.000	0.00	13.69	80.00	80.98	174.1379	No activity on Site , due to delayed payment	
27	VR	Emergency Works for the Upgrading of Ho-Adidome Road 52.2-67.0KM (Lot 2)	14.8	GOG	Progressive & Modern Co. Ltd	27-Apr-10	17-Jun-10	17-Feb-11	15-Dec-11 31-Dec-14 31-Jan-15	0.00	16.674	0.00	16.674	0.00	18.23	0.00	10.49	0.00	1.22	0.00	0.00	0.00	28.90	0.00	3.956	0.00	5.24	80.00	74.54	174.1379	No activity on site, due to delayed payment	
28	VR	Emergency Works for the Upgrading of Ho-Adidome Road 37.2-52.2KM (Lot 3)	15.0	GOG	JahNicof Ltd	22-Apr-10	17-Jun-10	17-Feb-11	16-Dec-11 31-Dec-14 31-Jan-15	0.00	16.501	0.00	16.501	0.00	21.59	0.00	8.55	0.00	2.45	0.00	0.00	0.00	32.13	0.00	1.594	0.00	10.24	88.00	92.79	174.1379	Substantial Inspection held on July 15, 2017. Outstanding works of V.O. 6 & 7	
29	VR	Eastern Corridor Roads Project. Lot 1: Asikuma Junction - Hohoe Road (KM 0 - KM 45)	45.0	GOG	G.S International Developers (Gh) Limited	17-Oct-11	22-Nov-11	22-Dec-13	05-Mar-17	0.00	105.778	0.00	135.778	0.00	104.46	0.00	42.38	0.00	0.00	0.00	0.00	0.00	9.350	0.00	10.973	0.00	66.878	53.0	62	126.2	EoT of six(6) months up to 5th May,2018 has been requested but approval has not been granted yet. Currently the Contractor has suspended all works with effect from 5th November, 2017.	
30	VR	Eastern Corridor Roads Project Lot 4:Nkwanta - Oti Damanku Road (KM 0+000-KM 50+000)	50.0	GOG	China Jiangxi Corp.	17-Oct-11	12-Jul-11	7-Dec-13	05-Mar-17	0.00	113.492	0.00	148.578	0.00	49.34	0.00	37.836	0.00	0.00	0.00	0.00	0.00	53.093	0.00	41.72	0.00	95.485	30.58	42.3	175.0	Contractor suspended works since 3rd April 2018 due to delayed payment. Waiting for approval of EoT	
BRIDGES																																
31	UWR/NR	Construction of Steel bridges over River Gyanwali along Yala - Sombisi road (Wa-Walewale road) lot 1	N/A	GOG	M. Issah Ishaku & Bros. Limited	6-Oct-11	23-Jun-13	22-Jun-14	-	0.00	2.584	0.00	2.584	0.00	1.414	0.00	0.00	0.00	0.00	0.00	0.00	0.00	1.414	0.00	0.2982	0.00	1.170	76.3	54.73	516.7	Contractor has suspended works.	
32	UWR/NR	Construction of Steel bridges over River Kudage along Sombisi-Tantale road (Wa-Walewale road) lot 2	N/A	GOG	Bachest Ghana Limited	6-Oct-11	25-May-12	25-May-13	31-Dec-14	0.00	2.313	0.00	2.313	0.00	1.598	0.00	0.00	0.00	0.00	0.00	0.00	0.00	0.656	0.00	0.942	0.00	0.715	76.3	69.08	331.6	Contractor has suspended works.	
33	UWR/NR	Construction of Steel bridges over River Gongonwu on Tuvuu-Izabisi (Wa-Walewale road) lot 4	N/A	GOG	Jiangxi Zhongmei Eng. Const. Co. Ltd	8-Jan-11	25-May-12	25-Aug-13	-	0.00	4.465	0.00	4.465	0.00	1.051	0.00	0.00	0.00	0.00	0.00	0.00	0.00	0.000	0.00	0.00	0.00	3.413		23.6	-	The Contract has been terminated. The Bridge has been relocated ,awaiting new designs.	
34	UWR/NR	Construction of Steel bridges over River Kulpawn on Luari No. 1 - Jadima (Wa-Walewale road) lot 5	N/A	GOG	China Zhong Hao Limited	6-Oct-11	9-Oct-13	10-Apr-14	14-Jun-15	0.00	6.911	0.00	6.911	0.00	1.561	0.00	0.00	0.00	0.00	0.00	0.00	0.00	1.561	0.00	0.00	0.00	5.349	24.1	22.6	290.0	Contractor has suspended works.	
35	VR	Eastern Corridor Road - Lot 5 and 6	209.0	BNDES/ GoG	Construtora Andrade Gutierrez, S.A/ Construtora Norberto Odebrecht, S.A	9-Jul-12	19-May-14	4-Nov-16	31-Jul-18	\$ 290.64	0.00	\$ 290.64	0.00	\$ 145.89	\$ 34.70	0.00	0.00	0.00	0.00	0.00	0.00	187.961	0.00	0.00	USD 23.3791861	0.00	0.00	146.12	73.77	67.52	102.0	Contractor suspended Works on 11th May 2018. This will result in additional cost to GoG



NO	REGION	CONTRACT DESCRIPTION	LENG(KM)	SOURCE OF FUNDING	CONTRACTOR	AWARD DATE	START DATE	COMPLETION DATE	REVISED COMPLETION DATE	CONTRACT AMOUNT		REVISED CONTRACT SUM		TOTAL AMOUNT CERTIFIED TO DATE						TOTAL PAYMENT MADE TO DATE				OUTSTANDING PAYMENT		COST TO COMPLETE		PHYSICAL PROGRESS	FINAN PROGRESS	TIME ELAPSED %	REMARKS	
										FC (million)	LC (million)	FC (million)	LC (million)	WORKS		FLUCTUATIONS		CLAIMS				FC (million)	LC (GH¢million)	FC (million)	LC (GH¢million)	FC (million)	LC (GH¢million)					
														FC (million)	LC (million)	FC (million)	LC (million)	FC (million)	LC (million)													FC (million)
36	NR	Construction of Two (2) Combined CEPS Intervening Stations and GHA Rest Stops on the Tema-Paga Corridor-Lot 1 Savelugu Rest Stop	-	WB	Myturn Limited	11-Aug-14	26-Aug-14	30-Jun-15	23-Sep-15	0.00	5.465	0.00	5.465	0.00	0.00	0.00	0.00	0.00	0.00	0.00	0.00	0.00	4.611	0.00	0.00	0.00	0.00	0.00	89.0	-	361.5	Contractor has suspended works. Contractor to be invited to a meeting to discuss project status.
37	ASHR	Construction of Two (2) Combined CEPS Intervening Stations and GHA Rest Stops on the Tema-Paga Corridor-Lot 2 Sakamkrom Rest Stop	-	WB	Noryini Commercials Limited	11-Aug-14	25-Aug-14	30-Jun-15	23-Sep-15	0.00	6.986	0.00	6.986	0.00	0.00	0.00	0.00	0.00	0.00	0.00	0.00	0.00	5.816	0.00	0.00	0.00	0.00	0.00	93.0	-	361.5	Contractor has suspended works. Contractor to be invited to a meeting to discuss project status.
38	GAR	The Project for Improvement of Ghanaian Corridors (Grade Separation of Tema Intersection in Tema)		JICA	Shimizu - Dai Nippon	15-Dec-17	7-Feb-18	30-Apr-20		JPY 5,388.089	0.00	JPY 5,388.089	0.00	JPY 2,155.235	0.00	0.00	0.00	0.00	0.00	0.00	0.00	0.00	0.00	0.00	0.00	0.00	0.00	7.93	39.99	23.1	Construction of detour roads completed. Currently, the contractor is constructing the foot bridge. Earth works on service roads ongoing on harbour road and drainage works are also on going	
39	GAR	Tetteh Quarshie - Madina	4.6	GOG	Sonitra	6-Oct-06	17-Nov-06	17-May-09	1-Aug-16	\$17,414	23,559	\$37,054	59,429	\$40,580	63.64	\$5,240	61.89	3.67	30.37	40.78	104.51	0.00	119.94	8.17	50.70	49.71	157.49	100.0	668.49	467.0	Contractor about to hand over the works soon.	
40	ER	Lot 6: Nsawam - Apedwa Road, Kwafokrom - Apedwa (Dual carriageway)	31.7	GOG	China Int. Water & Elec. Corp.	26-Sep-08	17-Dec-08	14-Mar-12	15-Jan-13 31-Dec-14	\$116,923	28,756	124,010	30,934	\$37,630	67,847	0.00	0.00	0.00	0.00	0.00	\$117,135	0.00	52,997	GHC20.23327 097 & US\$ 35.88391247	GHC20.23327 097 & US\$ 35.88391247	GHC 63.64613269 & US\$ 6.13142656	84.9	-	-	-	Works on the Southbound Carriageway was finally taken over on 3rd July, 2018. Repackaging of Northbound carriageway waiting for approval.	
41	GAR	Tetteh Quarshie - Mamfe Road Project, Madina - Pantang Section	5.6	SF/BADEA/ GOG	China Int. Water & Elec. Corp.	18-Jan-08	29-Jul-09	18-Jul-11	28-Jan-12 01-Nov-12	\$25,750	14,850	\$25,750	21.00	32,2010786 4 & 17,036	79,5242947 & 3,707	0.00	0.00	0.00	0.00	\$17,036	\$25,498	3,707	78,363	15.75	9,966	0.00	0.00	98.0	-	213.8	Defects Liability Certificate issued. Remaining works to be repackaged as an addendum or as a new contract.	
42	WR	Rehabilitation of Ayamfuri - Asawinsot Lot 1 (Ayamfuri - New Obuasi) (KM 0-26)	26.0	IDA	China Jiangxi Corp. for Int. Economic & Tec. Coop.	21-Dec-12	2-May-13	1-May-15	1-Jul-16 1-Sep-15 Dec,2018	20.69	13.64	34.17	39.54	24.65	18.66	2.17	14.35	0.09	0.56	25.88	32.89	0.00	0.00	0.00	0.00	34	39.54	95	125.05	250	Substantial Taking Over was held on 29th May,2018.	
43		Supply & Installation of Materials for New Works & 2 Years Maintenance of Streetlights on the Suame Roundabout at Afrancho	N.A	GOG	PREFOS LIMITED	08-Aug-17	11-Aug-17	11-Aug-18	-	0.00			0.00	0.00	0.00	0.00	0.00	0.00	0.00	0.00	0.00	0.00	0.00	0.00	0.00	0.00	100	-	100	100m 4x25sqmm underground cable laid. New works completed.		
44		Supply & Installation of Materials for New Works & 2 Years Maintenance of Streetlights on at KNUST Police Station to Ejisu Highway (Lot 1)	N.A	GOG	PREFOS LIMITED	08-Aug-17	11-Aug-17	11-Aug-18	-	0.00	17,312	0.00	0.00	0.00	0.00	0.00	0.00	0.00	0.00	0.00	0.00	0.00	0.00	0.00	0.00	17,312	57.28	-	100	28 Poles planted. 22 Single arms fixed 6 Double arms fixed. 34 LED luminaires fixed. 450 m 2x25sqmm dropping cable fixed. 2558 4x25sqmm underground cable laid. 121 Terminal blocks fixed. 3 sub stations. 242 chamber cut outs done. Due to the ongoing Decongestion of Ejisu-KNUST section of the N6 LOT 2 (Oduom and Ejisu Roundabouts) the contractor cannot finish this part of his works until the above mentioned project is partially completed.		
45		Supply & Installation of Materials for New Works & 2 Years Maintenance of Streetlights on the Abedi Pele Roundabout to Shishegu-Nyankpala Highway (Lot 2)	N.A	GOG	WENDY ROSE LIMITED	11-Aug-17	11-Aug-17	11-Aug-18	-	0.00	7,791	0.00	0.00	0.00	0.00	0.00	0.00	0.00	0.00	0.00	0.00	0.00	0.00	0.00	0.00	7,791	100	-	100	Works completed. Taking over in October, 2018.		
46		Supply & Installation of Materials for New Works & 2 Years Maintenance of Streetlights on the Tema Roundabout to Dawhenya Highway (Lot 3)	N.A	GOG	PREFOS LIMITED	28-Jul-17	11-Aug-17	11-Aug-18	-	0.00	13,623	0.00	0.00	0.00	0.00	0.00	0.00	0.00	0.00	0.00	0.00	0.00	0.00	0.00	0.00	13,623	31.44	-	100	8840m 4x25sqmm underground cable laid.		
47		Supply & Installation of Materials for New Works & 2 Years Maintenance of Streetlights on the Pantang -Aburi road (Lot 4)	N.A	GOG	WENDY ROSE LIMITED	28-Jul-17	11-Aug-17		-	0.00		0.00	0.00	0.00	0.00	0.00	0.00	0.00	0.00	0.00	0.00	0.00	0.00	0.00	0.00		-	-	100	Site Possession given on 28-Aug-17.Contractor yet to mobilize to site		
48		Supply & Installation of Materials for New Works & 2 Years Maintenance of Streetlights on the Mallam-Kasoa- (Lot 4)	N.A	GOG	WENDY ROSE LIMITED	28-Jul-17	11-Aug-17	11-Aug-18	-	0.00	13,163	0.00	0.00	0.00	0.00	0.00	0.00	0.00	0.00	0.00	0.00	0.00	0.00	0.00	0.00	13,163	-	-	100	No new works done. Maintenance works ongoing		



## APPENDIX C

Item	Contract Description	Contract/ Supplier/ Consultant	Services Contract In Dollar Amount (\$)	Services Contract In Ghana Cedis (GHS)	Date Signed Mm/dd/yr	Contractual Start Date Mm/dd/yr	Contractual Completion Date Mm/dd/yr	Extended Completion Date Mm/dd/yr	Remarks
PROJECTS ON TSP									
1	Construction Supervision of Rehabilitation of Ayanfuri-Asawinso Road (Lots 1)	GHA	\$20,694,136.81	GHS 13,641,596.55	10-01-13	15/02/12	04-01-15	31/12/2017	Substantial Taking Over was held on 29th May,2018.
2	Construction Supervision of Rehabilitation of Ayanfuri-Asawinso Road (Lots 2)	GHA	\$8,440,000	GHS29,300,000	11-01-13	15/02/13	05-01-15	31/12/2017	The project has been taken over on 5 <sup>th</sup> December 2017.
PROJECTS ON ALTTFP									
3	Consultancy Services for the Supervision of Rehabilitation of Agona Junction-Elubo road. Lot1	K2 and Associate,Inc.	\$22,168,060.23	GHS15,215,000	15/08/2012	24/08/2012	42,012.00	01-11-17	Project is in defect liability period.
4	Consultancy Services for the Supervision of Rehabilitation of Agona Junction-Elubo road.lot2	K2 and Associate,Inc.	\$20,380,000.00	GHS29,925,000	15/08/2013		10-06-15	01-11-17	Project is in defect liability period.
5	Consultancy Services for the Supervision of Rehabilitation of Agona Junction-Elubo road.lot3	K2 and Associate,Inc.	\$20,380,000.00	GHS29,925,000	15/08/2013		10-06-15	13/03/17	Project is in defect liability period.
6	Construction of Anyaado Rest Stop	Bans Consult		GHS323,809,250	15/03/13				As at the end of May 2016 the contractor has completed substructure. Which is about 40% of the work done . The project is lacking funds.

Item	Contract Description	Contract/ Supplier/ Consultant	Services Contract In Dollar Amount (\$)	Services Contract In Ghana Cedis (GHS)	Date Signed Mm/dd/yr	Contractual Start Date Mm/dd/yr	Contractual Completion Date Mm/dd/yr	Extended Completion Date Mm/dd/yr	Remarks
PROJECTS ON TSIP (TRANSPORT SECTOR IMPROVEMENT PROJECT)									
7	The Assessment Study To Implement Output And Performance Based Road Contracts For The Upgrading Of Tatale-Zabuzugu-Yendi-Tamale Road (Section R 201) 165.8km, Zabzugu- Nakpali-Bimbila Road (Section R29/01) 73.6km And For Selected Feeder Roads In The Brong-Ahafo Region,Northern Region,Upper East Region, and Upper West Region(1360km) + Addendum	UWP Consulting(Pty) Ltd/ Knight Piesold Ghana Ltd	\$3,078,075.98		11/4/2017 + 13/06/2017 (Addendum)	05-11-17	Jan-18		1.Draft Final Concept Design Report submitted to GHA reviewed with comments sent to the Consultant for incorporating into the Final Concept Design Report. 2. Report on introduction of OPRC Workshop was received from the Consultant. 3. Draft Addendum No. 4 on Yendi Township Concept Design was submitted to the World Bank for their review and "no obligation". 4. Draft Environmental and Social Impact Assessment Report was received from the Consultant, reviewed and comments sent to the Consultant. 5.Social and citizen Engagement Report was submitted, reviewed and accepted by GHA. 6.Draft Assessment Study Report was submitted to GHA, which was reviewed and comments sent to the Consultant for imcoorporating into the Final Assessment study Report.
8	Individual Consultancy services as Social Safeguards Specialist For The Upgrading Of Tatale-Zabuzugu-Yendi-Tamale Road (Section R 201) 165.8km, Zabzugu- Nakpali-Bimbila Road (Section R29/01) 73.6km And For Selected Feeder Roads In The Brong-Ahafo Region,Northern Region,Upper East Region, and Upper West Region(1360km)	Joseph Ayilo	\$427,650		27-11-17				Social Safeguard monitoring report submitted for the quarter under review.



tem	Contract Description	Contract/ Supplier/ Consultant	Services Contract In Dollar Amount (\$)	Services Contract In Ghana Cedis (GHS)	Date Signed Mm/dd/yr	Contractual Start Date Mm/dd/yr	Contractual Completion Date Mm/dd/yr	Extended Completion Date Mm/dd/yr	Remarks
<b>DANIDA FUNDED</b>									
9	Consultancy Services for Detailed Design of Takoradi-Agona Junction Road	Danida				28/11/12			GHA has reviewed the final detailed design report from Ablin Consult. Construction has not began because Danida has suspended the works or construction.
10	Consultancy Services for Design Development, Detailed Design, Tender Document Preparation, Tendering Assistance and Construction Supervision of New Bridges in Northern Ghana.	Sweco	\$1,784,550			03-04-13	03-04-17		Phase II of the Services completed. Phase III, involving the Construction Supervision has commenced
<b>ORIO/GOG LOAN FUNDED PROJECTS</b>									
11	Rehabilitation of Benchema-Adwufia Road								Contractor has been selected for the works contract. Supervision Consultant has also been selected and contract yet to be signed.
<b>BRAZILLIAN/GOG LOAN FUNDED PROJECT</b>									
12	Consultancy Services for the Design Review & Constroction Supervision of Eastern Corridor Road Projects. Lot 5 (Oti Damango Bimbilla-Yendi) and Lot6 (Yendi-Sakrogu-Nakpanduri)	Associated Consultant	\$113,492,000			19/05/14	\$42,471	/07/18	MRH has accepted the Addendum No. 1. The project has been extended to July 2018.

Item	Contract Description	Contract/ Supplier/ Consultant	Services Contract In Dollar Amount (\$)	Services Contract In Ghana Cedis (GHS)	Date Signed Mm/dd/yr	Contractual Start Date Mm/dd/yr	Contractual Completion Date Mm/dd/yr	Extended Completion Date Mm/dd/yr	Remarks
PUBLIC PRIVATE PARTNERSHIP (PPP)									
13	Accra -Tema Motorway Expansion	Messrs Roughton International		GHS 1,811,371.88 Phase 1 (Feasibility Studies) and GHS 266,916.88 Phase 2 (Procurement of Investors)		09-04-16	s		Messrs Roughton International has submitted final feasibility studies report to the Ministry of Roads and Highways/ GHA. MRH/GHA will make a formal request to the Ministry of Finance for approval.
14	Accra -Kumasi Dualisation Project	Messrs PWC							MRH is procuring Price Water Housing Cooper (PWHC) Gh. Ltd to provide advisory services on the structure. The Minister is awaiting MoF response to a letter from MRH dated 29th Dec. 2018 on specific warrant/commencement certificate.
15	Accra-Takoradi Dualisation Project	Feedback /GIBB	\$ 3,574,796.28						The Consultant has updated and submitted Prefeasibility report on 23rd Jan, 2018. Approval one (1) was issued to the consultant. Detailed feasibility study currently on-going.
17	Missions from Development Partners								There were two JICA missions within the quarter. An Audit mission was conducted on 18/05/2018 to assess Japanese ODA projects in Ghana with focus on the Assin Praso Bridge. The second mission was conducted by the newly appointed Dep Director, Africa's Department JICA head quaters on the 14/06/2018 to undertake final review of the RFP for the Volivo Bridge.
PROJECT ON JICA									
18	Construction of a New Bridge Across the Volta River on the Eastern Corridor Project				09-08-14	07-02-18	07-06-20		Procurement of a Supervision Consultant is on-going.
19	Project For The Improvement of Ghanaian Corridors (International Grade Separation of Tema Interchange)	CTI Engineering International Co. Ltd							Works commenced on 7th feb, 2018. Work is progressing.



tem	Contract Description	Contract/ Supplier/ Consultant	Services Contract In Dollar Amount (\$)	Services Contract In Ghana Cedis (GHS)	Date Signed Mm/dd/yr	Contractual Start Date Mm/dd/yr	Contractual Completion Date Mm/dd/yr	Extended Completion Date Mm/dd/yr	Remarks
GOG									
20	Construction Services For Inventory and Condition Survey of Ghana Highway Authority Bridges (Lot1: Western and Central Regions)	Delin Consult Limited		GHS 980,504.45	03-01-17	04-01-17	10-01-17		The Consultant has submitted their draft final report to GHA.
21	Construction Services For Inventory and Condition Survey of Ghana Highway Authority Bridges (Lot2: Greater Accra, Volta and Eastern Regions)	Associated Consultant		GHS 963,630	03-01-17	04-01-17	10-01-17		The Consultant has submitted his final report to GHA.
22	Construction Services For Inventory and Condition Survey of Ghana Highway Authority Bridges (Lot3: Ashanti and Brong Ahafo Regions)	Comptan Engineering and Planning Associates		GHS 989,000	03-02-17	04-02-17	10-02-17		The Consultant has submitted their Interim report to GHA.
23	Construction Services For Inventory and Condition Survey of Ghana Highway Authority Bridges (Lot4: Northern Upper East and Upper West Region)	Hag Consult Limited		GHS 988,522.50	03-02-17	04-02-17	10-02-17		The Consultant has submitted his final report and has raised certificate awaiting payment.
24	Consultancy Services For Consultancy Supervision Of Bolgatanga-Bawku-Polmankon Highway Including Bawku Bypass-109KM	Delin Consult Limited							Contract suspended on 12th March, 2018. for non payment
BANK OF GHANA									
25	Construction of Access, Diverging and Merging Lanes to the Cash Processing Center at the General Services Complex	GHA			08-03-16	08-10-16	02-10-17		Works are ongoing, however progress is slow.
PLANNING DIVISION									
26	Budget Preparation	GHA							Preparation of 2019 - 2022 budget for GHA commenced during the quarter under review

